

**School board pays lawyer  
\$95,000 + in legal fees**  
- see front page

**Elementary students get  
new hot lunch program**  
- see page 5

**BHS Marching Band plays  
West Side Story songs**  
- see pictures on page 8

# Belleville Times

76 Year No. 39

**Serving Belleville Since 1909**

Thursday, September 5, 1985

**35¢**

## Township boards schedule meetings

The Belleville Board of Education and the Board of Commissioners have scheduled their meetings for the month of September.

The board of education will meet Monday, Sept. 9, 8 p.m. at the board complex, 190 Cortlandt St. and on Monday, Sept. 23, 8 p.m. at School 3 on Union Avenue.

The board of commissioners will meet Tuesdays, Sept. 10 and Sept. 24 at town hall, 152 Washington Ave. The commissioners will meet at 7 p.m. for a caucus session followed by a public session at 8 p.m.

## Matters in Brief

### Brown elected Legion commander

The Belleville Post 105 of the American Legion recently elected officers for the 1985-86 year.

Newly-elected officers include: Ray Brown, commander; John Gaw, first vice commander; Dave Purdie, second vice commander; Tom Devine, third vice commander; Gene Clark, judge advocate; Fred McGarr, finance officer; Ray Wellen, historian; and Anthony Cerniglia, service officer.

Installation ceremonies will be conducted Saturday, Sept. 14, 8 p.m. at the post home, 621 Washington Ave.

### Republicans kick off campaigns

A campaign party kickoff is ready to roll tonight for Republican Assembly candidates John Kelly and Marion Crecco.

"Everyone is welcome to join us for food, fun and dixieland music tonight at 1 Town Hall Square in Nutley," Bloomfield Councilman Robert Fetterly, campaign manager for the GOP slate, said.

The party is free to all and will begin at 7:30 p.m. Fetterly said the program portion will be brief and to the point.

Kelly and Crecco are running in the 30th Legislative District which is presently represented by Assemblyman Buddy Fortunato and Steven Aduabato of Montclair. Kelly is president of Nutley Savings and Loan and a former assemblyman. Crecco is a resident of Bloomfield.

### Medical assistants meet at Maass

The Essex Chapter of Medical Assistants will conduct meetings every second Wednesday of the month at the Clara Maass Medical Center, Belleville.

The group's first meeting will be Wednesday, Sept. 11, at 8 p.m.

Dr. Losardo, a cardiologist from Belleville, is scheduled to speak at the meeting.

Membership is open to medical assistants, lab technicians, receptionists or any person in the allied health field. For information, call 751-5317 after 7 p.m.

### Employee attacked by shoplifters

An employee of the Grand Union on Main Street was allegedly attacked by a man assisting a woman who shoplifted \$125 worth of meat from the store last Wednesday.

According to Det. Captain Ray Kimball, Ed Gruscynsky, an assistant manager at the store, tried to stop Isabelle Spanos of Belleville, who was leaving the store with a cart of unpaid meat. When Gruscynsky walked out of the store, he was allegedly punched by a man waiting for Spanos.

The man and woman, who were then joined by a third man, were seen running with a cart south on Main Street. Police searched the area and apprehended Spanos, Joseph Miraglia of Belleville and William Spanos of Newark at the corner of Main and Holmes streets.

Isabelle Spanos was released without bail, pending a court hearing. Both men were being held by police.

Gruscynsky was treated for injuries at Clara Maass Medical Center and released later that day.

### Female stress is discussed Sept. 10

The solution to reducing stress level and achieving greater productivity for the working woman, the homemaker or single parent will be discussed at the Essex County Cooperative Extension workshop Tuesday, Sept. 10, 12-3 p.m. at the Park United Methodist Church, 120 Broad St., Bloomfield.

Lynn M. Bush, health education coordinator in the area of stress management for Blue Cross/Blue Shield, will be the featured speaker. Ms. Bush will define and identify stress and discuss its effect on job performance and on personal lives.

The program is free of charge. To register, call the extension office at 239-5841.

## Students back in school

## Teachers prepare to achieve goals

By Michelle Jeannotte  
Increasing computer literacy programs and improving the High School Proficiency Test scores are two goals set by Belleville administrators for the 1985-86 school year.

Addressing more than 200 teachers in a preschool program Tuesday, Assistant Superintendent of Schools Michael Lally discussed the three major goals set for the new school year.

"They are our blueprints of educational planning," Lally said.

One of the goals set forth is the developing of a computer literacy program for grades K-12. Lally said. This year, a new computer literacy course for grades 9 and 10 was established in order to provide a coherent and consistent program with grades 11 and 12. There will also be an in-service computer literacy workshop for staff, he said.

"We have spent approximately \$13,000 for software and textbooks," Lally said. "I believe we have a handle on our first goal."

The second and third goals, Lally said, is to improve compositional and mathematical

skills - two skills examined in the High School Proficiency Test (HSPT).

Over the past year, 180 curriculum guides have been updated and revised. Among those guides which will be focused on within the next few months are a language arts guide and a math exposure guide, Lally said.

Receiving higher scores on the HSPT is one goal Belleville High School Principal Joseph Ciccone would like to see accomplished.

The HSPT, which replaces the Minimum Basic Skills (MBS) test is a very difficult test, but we must prepare the students for this," Ciccone said. "In March of 1986, every ninth grader must pass this test because it will have a great impact upon their graduation status."

Another goal set by administrators, particularly that of Ciccone, is to receive a good report from the Middle States Evaluation team which will visit the high school Nov. 12-15.

"I don't know why they chose the high school," Ciccone said, "but I believe it is a ways and

(Continued on page 3)

## School board lawyer received \$95,000 +

By Michelle Jeannotte

The exact amount of legal fees incurred by the Belleville Board of Education during the 1984-85 school year, according to Edward Appleton, school board secretary, was \$95,228.50 - \$13,728.50 more than the figure given by Board President Dr. Anthony D'Agostino at the board's meeting Aug. 19.

A question of legal fees paid to Lawrence Schwartz, board attorney, were questioned by residents at the board's last meeting. Jackie Rega of Belleville Avenue, who cited a figure of \$90,000, questioned the board as to why the fees were so high.

"I'm not questioning whether he's qualified or not," Rega said. "I'm just wondering why it

cost \$90,000 for legal fees."

Dr. Anthony D'Agostino, who told Rega his figure of \$90,000 was incorrect, said the amount of legal fees paid to Schwartz was \$81,500. Some board members acknowledged D'Agostino's figure by nodding their heads in agreement.

However, residents were still not satisfied with the figures. Tom Spillane, a former board member, asked that exact figures be made available to the public. In response to Spillane, Board Secretary Appleton, compiled the legal expenses paid over the past school year.

A total of \$95,228.50 in legal fees was paid to the firm of Schwartz, Pisano & Simon for the 1984-85 school year, com-

(Continued on page 3)

## Freeholders consider leasing golf courses

By Kara Laczynski

A proposal to lease the Hendricks Field Golf Course in Belleville to an outside contractor will be considered by the Essex County Board of Freeholders at their Sept. 11 meeting.

The meeting will be conducted Wednesday, Sept. 11, at 2:30 p.m. in room 506 of the Hall of Records in Newark.

Maintenance and management of the course would be taken over by an outside agency if the plan is approved. Freeholder President Jerome D. Greco said.

The proposal would not take effect until next spring because the freeholders have funded the golf course through this year, he

said.

This year approximately \$35,000 is being spent on maintenance and services for Hendricks Field, according to Jack Sheik, program service manager of the Department of Parks and Recreation. Salaries for employees of Hendricks, as well as the Weequahic and Francis A. Byrne golf courses, is \$450,000, Sheik said.

"Our plan includes the stipulations that green fees would be set by the freeholders as they are now," Greco said, "and that all county employees currently working at the courses would be retained."

"The golf courses are in dis-

(Continued on page 3)



**Teachers Get Ready** - Teachers of the Belleville Public School System joined together at a preschool program coordinated by Superintendent of Schools Michael Nardiello. The teachers were informed of goals set forth for the new school year as well as getting a day to prepare for the first day of school.

## Ordinance increases 3 employees' salaries

An ordinance, introduced by Mayor Michael Marotti, will increase the salaries of three township employees if it is approved at a meeting Sept. 10.

The ordinance, which would affect only three township employees if passed, would raise the salary of construction code official Robert Domenick from a maximum of \$33,342 to a maximum of \$36,547; recreation maintenance supervisor Tony Caruso from a maximum of \$30,563 to a maximum of \$34,196; and superintendent of recreation Dennis Buckley from a maximum of \$34,196 to a maximum of \$34,196, all beginning Jan. 1, 1985.

All three township employees received 7 percent salary increases in an ordinance adopted in March and are eligible to receive an 8 percent and 9 percent salary increase in 1986 and 1987, respectively.

Maximum salaries for the

construction code official, recreation maintenance supervisor by 1987 would be \$41,063, \$38,423 and \$38,423, respectively.

In comparison with neighboring Essex County municipalities, the salaries proposed for Belleville employees would not be comparable to the size of the township (approx. pop. 33,000). For example, the construction code official in West Orange, which has a population of 39,510, receives a salary of \$40,615, the same figure given to the town's maintenance supervisor. The superintendent of recreation receives a salary of \$31,216.

In Montclair, which has a population of 38,321, the construction code official receives a salary of \$28,209. The superintendent of recreation in Montclair receives a salary of \$24,133.

(Continued on page 18)

## Kelly asks Aduabato to defend Shapiro

Republican State Assembly candidate John V. Kelly today called on his opponent in the November 5 general election, Stephen Aduabato Jr., to repudiate his running mate Democratic gubernatorial candidate Peter Shapiro's claim of having reduced taxes in Essex County by \$60 million during his tenure as Essex County Executive. County taxes rose \$56 million during the same period.

"Peter Shapiro has deceived the voting public by claiming in recent statements of having reduced taxes in Essex County by \$60 million when in fact taxes

have been raised by nearly the same amount and I'm calling on my opponent, Mr. Shapiro's running mate, Stephen Aduabato, to repudiate that claim and tell the voting public the truth," Kelly said.

"It's political chicanery, hypocrisy at best, and I'm calling on Stephen Aduabato to publicly denounce these false claims by his running mate in the best interests of the voting public," Kelly stated.

Kelly cited a recent statement, issued by Shapiro in which he said: "For political leaders to gain the confidence and trust of those they represent, they must speak in a straightforward manner, with candor and intellectual honesty."

"I'm asking Assemblyman Aduabato to do just that and repudiate Shapiro's false claim of tax reduction," Kelly said.

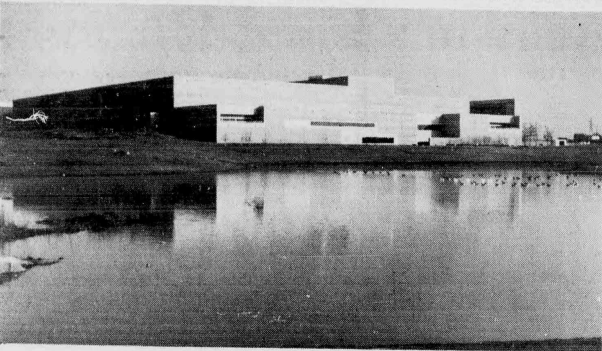
"Peter Shapiro's claim of a \$60 million tax reduction is more than intellectual dishonesty. It's an outright lie and a fraud," Kelly said, adding, "and I'm asking Aduabato to come forth with the facts and admit to the people that his running mate is deceiving the people. There's been a \$56 million increase."

"Just as any homeowner in the 30th Legislative District



John V. Kelly

(Continued on page 18)



Award Winner - The firm of Herbert Beckhard Frank Richland & Associates recently received an architectural award for the Philip Morris Manufacturing Facility (shown above) which was built in Cabarrus County, N.C.

## F. Richlan's architectural firm wins award for design excellence

The New York architectural firm of Herbert Beckhard Frank Richlan & Associates, of which former Belleville resident Frank Richlan is a partner, has received the prestigious Architectural Precast Association's Carl E. Shawver International Award for Design Excellence for its Philip Morris Manufacturing Facility in North Carolina.

Completed in 1983, this 1,800,000 sq. ft. project has also received design awards from the Prestressed Concrete Institute and the New York Chapter of the American Institute of Architects and has received considerable recognition from the architectural press.

Frank Richlan, an 18-year resident of Nutley, founded Herbert Beckhard Frank Richlan & Associates with his partner, Herbert Beckhard, in December of 1982. Prior to that, Richlan had spent 15 years and Beckhard, 26 years, as senior associate and partner, respectively, of the late Marcel Breuer, one of the foremost architects known today.

In two-and-a-half years, the firm has grown from a five-person office to a staff of 30 people

and has been responsible for a wide variety of projects, ranging from private residences to an office complex being proposed on a 106-acre site owned by American Cyanamid in Bridgewater.

The firm has also designed new offices for the New Jersey Devils hockey team at the Brendan Byrne Arena and a new dormitory being built on the Rutgers University campus in Newark.

### Another DeCarlo Listing!



**Cape Cod Beauty!**  
Move in condition with new wall to wall carpeting. Fully aluminum sided, fenced in yard. 3 bedrooms, 1½ baths, living room with fireplace. Beautifully paneled rec rm in basement. Asking \$133,900. Call Today!

**Ann DeCarlo**

AGENCY/REALTOR  
880 BROAD ST., BROOKDALE, BLOOMFIELD  
748-5288



### Chamber of Commerce sponsors lecture series

A small business series, designed to educate the business community with information pertaining to all phases of the small business, will be conducted monthly by the Belleville Chamber of Commerce.

In recent years, there have been many new innovations that the business person may not be aware of. In today's complex and changing times, the chamber of commerce has developed a program that will deal with computers, taxes, security, credit accounts, insurance and much more.

The first subject of the monthly series, which will be conducted Wednesday, Sept. 11, at 11:45 a.m., will be personal and small business computers. Questions will be asked such as "Do you really need them?", "If so, which one and what type?" or "Will it benefit my business

and how?" Logical Alternative Inc., computer consultants, will be represented by Tina Nocera. She will lecture and answer any questions pertaining to the computer.

Admission to the lecture, which will take place at The Chandelier, is \$15 per person with buffet. Those interested in attending should call Michele Dalbo at 759-4848 or Howard Halpern, chamber of commerce president.

**Pharmacy Footnotes**

Vincent Cozzarelli  
Reg. Ph.

**MAO INHIBITORS AND FOOD**  
Individually taking monoamine oxidase (MAOI) inhibitors, which are occasionally prescribed for depression or high blood pressure, need to exercise great care in food and beverage selections. Food and drugs that contain high levels of tyramine, a natural component, can interact with MAOI inhibitors. It can force blood pressure to dangerous levels and cause severe headaches, brain hemorrhages and even death. Tyramine-rich foods and beverages include aged and fermented items such as sharp cheese, yogurt and sour cream. It also includes pickled herring, salami, pepperoni, soy sauce, active yeast preparations, beer, Chianti wine and sherry. In addition, livers from beef and chicken, broad beans, corned figs, bananas and avocados are on the list well.

You'll find warnings placed on the labels of prescription medications when there is a problem taking them with certain foods and beverages. Complete prescription service is provided at RDS-SMORE PHARMACY, 338 Washington Ave., 759-1968, 759-1956. We handle the sale and rental of convalescent aids including walkers, wheel chairs, crutches and canes. Open: 9 am-10 pm daily, 9 am-9 pm Sundays.

**HANDY HINT:**  
Coke, coffee, chocolate and raisins are also suspected of reacting adversely with MAOI inhibitors.

**TROISE INSURANCE AGENCY**

ALL FORMS OF INSURANCE  
Auto - Motorcycle - Truck  
Free Computer Quote  
Personalized Service

**759-4100**  
172 WASHINGTON AV. BELLEVILLE  
(ACROSS FROM MOTORCYCLE MALL)

LOW DOWN PAYMENT  
IMMEDIATE COVERAGE

NOTARY PUBLIC

**"Your Movie Rental Store For '85"**

NO CLUBS, NO MEMBERSHIP FEE

**NOW SHOWING!**  
PASSAGE TO INDIA  
THE SURE THING  
SLUGGERS WIFE  
DESPERATELY SEEKING SUSAN  
KILLING FIELDS  
KING DAVID  
TUFF TURP  
MEAN SEASON  
DISNEY'S PINOCCHIO  
RUNAWAY  
MASS APPEAL

**WEEKDAY SPECIAL**  
3 Tapes for 2 Days... **\$8**

Rent any Tape  
Tues.-Thurs. . . **\$1.89**

• All Ratings G-XXX  
• We Rent and Repair VCRS  
• Over 1500 Movies  
• Videotaping For All Occasions

Coming Soon: Amadeus, Fri. 13th Part 5, Breakfast Club, Police Academy 2, Missing in Action II

**Instant Video**  
186 Main Avenue  
Passaic Park • 778-4751

Open Daily till 9 p.m.

1885 1985

100 Years of Uninterrupted Dividends

**FIRST DeWITT**

**YOUR FULL SERVICE FINANCIAL CENTER**

#### SAVINGS SERVICES MONEY MANAGEMENT INSURED INVESTMENTS

- MONEY MARKET ACCOUNTS
- TAX DEFERRED IRA's
- SHORT, MEDIUM, & LONG-TERM CD's
- CHECKING PLUS INTEREST • PASSBOOK ACCOUNTS
- DIRECT DEPOSIT OF SOCIAL SECURITY & GOVT. CHECKS
- HOLIDAY CLUBS

High Rates Paid At All Times!

#### LENDING SERVICES

- MORTGAGE LOANS • HOME IMPROVEMENT LOANS
- CONSTRUCTION LOANS • STUDENT LOANS • CAR LOANS

Drive In Banking At All 9 Offices

HENRIK TVEDT President & Chief Executive Officer

**FIRST DeWITT SAVINGS**

CORPORATE HEADQUARTERS, 6 POMPTON AVE., CEDAR GROVE AND LOAN ASSOCIATION



BELLEVILLE • BLOOMFIELD • CEDAR GROVE • HOPATCONG

BRICKTOWN • PARSIPPANY



TELEPHONE **751-2800** ALL OFFICES



**REALTY WORLD.**

**THE RESULTS PEOPLE.**

**BAUMGARDNER AGENCY**

JAY BAUMGARDNER GRI  
BROKER

**TO BE BUILT**

\$144,900  
Bloomfield 3 BR  
Raised Ranch.  
Call To See Plans.

Covering  
Bloomfield - Glen Ridge - Nutley - Belleville  
378 Broad Street, Bloomfield, N.J. 743-8382

## Administrators set goals for new year

(Continued from page one)

means of showing a community what we still need at the high school."

Along with changes in curriculum, changes were made in the physical appearance of the high school. Over the past few months, the high school halls and classrooms have been repainted and the gymnasium floor has been resurfaced. All are in preparation of the Middle States Evaluation.

The purpose of the preschool program was to inform teachers of plans made for the school year as well as giving them a day to prepare themselves for the start of a new year.

Positivism, according to Dr. Elaine Scamio, Essex County Superintendent of Schools, is a feeling teachers should be experiencing as they approach the new school year.

Positivism, she said, is believing that teachers do have an influence on students and that they contribute to the entire school community and not just to their little world of the classroom. Teachers, she said, should focus on individualizing themselves and finding ways in which they are unique to the system.

Too long, she said, teachers have been fitting into a mold. Teachers, she said, must focus on ways their uniqueness can move mountains.

Teachers, she said, should always be striving for what is better.

"What is better?" she said. "Better is having students come to school on time and wanting to learn. Better is better test scores; feeling like our job is doable; and believing that we can make a difference."

## Board attorney received \$95,000+

(Continued from page one)

pared to \$53,635.75 paid for the 1983-84 school year. The retainer charged to the board was \$10,000, while the hourly rate, charged to the board was \$85. The \$85,228.50 figure calculates 1,000 hours (or 25 full 40-hour weeks) of service to the Belleville Board of Education.

Schwartz, whose reappointment was recently approved by the school board, also serves four other school boards (Bloomfield, Bernardsville, Fairfield and North Haledon). Schwartz, who is now a resident of Bernardsville, charges no retainer to the town's school board.

Dr. D'Agostino, as well as school board members Phil Linfante and Ernest Zoppi,

defended Schwartz, noting that 50 percent of the legal fees were charged for work on two tenured cases this past year.

The school board appointed Schwartz as school board labor counsel from July 1, 1983 to June 30, 1986, with a \$10,000 retainer and \$85 hourly rate. Services included in the retainer are his attendance at meetings (three per month or more if needed); telephonic communications with

the superintendent, assistant superintendent, board secretary, board president and board members; conferences with the above (not including matters in litigation, arbitrations, grievances and negotiations); and all letter opinions to the board of education, including the requisite research (not including matters in litigation, arbitrations, grievances and negotiations).

## Freeholders may lease golf courses

(Continued from page one)

graceful condition now," he continued. "An outside contractor could buy materials more cheaply, use updated equipment and manage employees better than the county has."

"I think that Hendricks Field would become a private country club and the vast majority of people want to have a golf course where the fees are reasonable," Freeholder Arthur Clay said in an OBC-TV interview.

"We paid for the park with hard-earned tax dollars and I don't think that it should be turned over to a private interest group who will make money on our taxes," Clay said.

Weequahic Golf Course in Newark and the Francis A. Byrne Golf Course in West Orange would also be included in the bid if the proposal is approved.

Mary Ann Carissimo,  
D.D.S.

General Dentistry

184 Pompton Avenue

Verona, N.J. 07044

Tel. 239-8315

By Appointment

## Lee Riders Jackets and Jeans



A denim jacket that has become a classic. Suitable for city or country in regular or bleached Western denims. 14 ounce, 100% cotton, indigo dyed and black also controlled shrinkage.

Lee  
The brand that fits™

	Jackets	Jeans
Indigo	34 <sup>95</sup>	19 <sup>95</sup>
Black	35 <sup>95</sup>	24 <sup>95</sup>

## Atlantic Uniform Co., Inc.

444 Washington Avenue, Belleville

open 9:00 a.m. to 5:30 p.m.

751-1242

Mon. & Fri. til 7:30 p.m.

## art galleries royale

500 Stuyvesant Ave.  
Lyndhurst, N.J.  
438-3075

## OIL PAINTINGS

Large Selection On Display  
Largest Gallery in New Jersey

Lithographs 9 prints  
Photos Painted on Canvas  
Stock & Custom Frames  
Complete Framing Department

## STUDY THESE

## BACK TO SCHOOL BUYS

	Reg.	SALE
Filler Paper - 200 sheets	1.79	.49¢
70 Sheet Spiral Notebook	98¢ ea. 3 for	99¢
3 Subject Notebook	1.69	.89¢
5 Book Covers (pre-packed)	.79¢	.39¢
10 Pencils (pre-packed)	1.29	.39¢

Quartz Watch \$9.95

Available at:

## Good Health Pharmacy

313 Union Ave., Belleville

759-2761

Mon. - Fri. 9:30 a.m. - 8 p.m., Sat. open 'til 6 p.m.

## TOWNE DELICATESSEN & CATERERS

650 JORALEMON ST. BELLEVILLE N.J.  
751-3935

Week of September 5 thru September 9

Proudly Presents

## THE DELI SPECIALS

Now Featuring Thumann's Deli Franks  
Fresh Bagels - Saturdays & Sundays

1 lb. HOT JEWISH  
PASTRAMI

\$3<sup>28</sup>

½ lb. IMPORTED  
KRAKUS HAM

\$1<sup>57</sup>

½ lb. Hormel DiLusso  
GENOA SALAMI

\$2<sup>38</sup>

1 lb. Finlandia  
SWISS CHEESE

\$1<sup>83</sup>

Residential - Industrial - Commercial  
Catering

Join Our Free Sandwich Club

Member of Belleville Chamber of Commerce

## Kelly & Crecco Assembly '85

## Nutley Headquarter Opening

Thursday evening, September 5th, 7:30 P.M.

1 Town Hall Square  
Chestnut Street, Nutley

Printed by John T. Kelly Campaign Committee



# Belleville Times

Serving Belleville Since 1909 (USPS 049-220)

Published Every Thursday  
At 155A Washington Ave.  
Belleville, N.J. 07109

Annual Subscription \$14.00  
Senior Citizens \$7.00

Second-Class Postage Paid  
At Newark, N.J.  
Postmaster: Send address  
changes to The Belleville Times,  
155A Washington Ave., Belleville, N.J. 07109

Publisher: Frank A. Orechio  
Assistant to the Publisher:  
Michelle Jeannotte

To report news and other items  
of interest, call:  
759-3200

## School's "In"

Wasn't too long ago the month of June came up on the calendar, and before we knew it, school was out — students went their merry way to enjoy summertime — school staff — some at least took long vacations — others took advantage of the off-time to further their education.

This week, school is "in". Gone are the summer months at the beach — at the mountains — and visiting far away places. This week both students and teachers buckle down to the job of either receiving an education or molding America's future leaders.

The beginning of school is a very exciting time. Hopes are high and dreamers dream dreams that never were conceived before. From K-12, there is no limit to a student's dream. Neither is there a limit to a student's achievement. If the students dream the impossible — if they set goals that are within reach of those dreams, they will have established for themselves a high standard which will stand them in good stead as the winter months roll by and next June becomes a reality. Computer literacy programs abound. We will see new programs initiated from K-12. Some of us oldtimers look back with envy — for in place of a computer, our principal gave us a yardstick. As school cranks up for one more year, we would ask teachers to pause in their labor today — look in the mirror and ask themselves where do they want to be come June 1986 — and what will their contribution to society be

during the ensuing nine months? And we would ask the students to do likewise. Where do you want to be in June, 1986 — and what sacrifices will you make to get there? Will you give up a passing fancy for responsible study? Will you give up a night at the dance for a night of homework? Will you make your parents proud of you by your academic performance or will you be sad because you let them down? And while we're at it, we would like to ask parents — will you accommodate the needs of your children or will you abandon them to a babysitter? Will you make it your job to learn something about computers or will you have your children think you're not "with it." Yes — it's 10:00 at night — do you know where your child is? The questions are endless. The commitment to your child's welfare is endless, too — but what you ultimately do is up to you. There are three parts to a school triangle — a student, the teacher and the parents — and the silent fourth party is God — and He needs no invitation. He's present all the time. Will you?

And so that our readers are not misled, sports are important too — we wish our sports teams regain their winning ways — both girls and boys.

*Frank A. Orechio*

## Public Golf Courses

At the Essex County Board of Freeholders meeting last week, there was further discussion concerning leasing of the three Essex County public golf courses to the North Newark Cultural Club. While there was no commitment to finalize such an agreement, a majority of the Freeholders have made the commitment to further study the plan.

This is an outrage! The excuse advanced for possible change in operation is an alleged deterioration of the golf course facilities. How ridiculous! If the allegation proves to be a fact, the action needed is to fire the superintendent in charge of maintenance — and not turn over the operation of a singularly important public facility for private gain.

Freeholder Art Clay is the driving force against turning over 350 acres of public golf courses to the North Newark Cultural Club. Clay should be applauded for his vigorous efforts on behalf of the

paying public that use the golf courses for their prime recreational needs.

County taxpayers paid to acquire the real estate for the golf courses. They belong to the public — they should continue to remain public property in the hands of public officials. If a majority of the Freeholders believe they are inadequate to properly maintain the golf courses, the available option is the creation of a Golf Course Authority to operate all three facilities. By the way — in Florida, there are some counties with such an authority — and they do a good job. No reason why an Essex County Golf Course Authority couldn't function better for the people that use the golf courses than the North Newark Cultural Club.

*Frank A. Orechio*

## Legal Fees

Last week we commented about the legal fees the School Board pays for services. In the 1984-85 year, the Larry Schwartz firm received \$95,228.50. \$10,000 was a retainer, reportedly paid up front on July 1, 1984.

On the basis of a 35-hour work week at \$85 an hour, the time worked adds up to 32 weeks. That's a lot of time to put in for legal services. However, the vouchers for every single hour have been submitted and approved by the Board.

It seems that we don't have to wait for a jury to come in for an

answer as to whether or not it makes more business sense to hire a full time attorney. There is no doubt, a full time attorney would cost taxpayers substantially less and no time should be lost by the School Board in examining the option and coming up with a decision. For the taxpayers — the sooner the better.

*Frank A. Orechio*

## Resident claims police used excessive force

To the editor:

(The following account commenced on Tuesday, Aug. 27, at 9 p.m. Both victims will be referred to as Youth 1 and Youth 2.)

Youth 1 was riding around the corner in his newly-purchased motorcycle and was spotted by a patrol car. He had not yet registered or insured the bike yet.

Youth 1 proceeded home down the street and was followed into his front driveway by the police. Both officers left the car and questioned him.

At this point, Youth 1's brother, Youth 2, came out of the house to see what was going on. Youth 1 was put into the patrol car by the officers who then proceeded toward the backyard. Youth 2, unaware of what was happening, stepped down and questioned the officers' motives, asking to see a warrant. The officers gave no response and pressed forward.

Youth 2 stood his ground, at which the officers threw him down stating, "You're under arrest" and began to cuff him. Youth 2 resisted and was met back with punches and kicks.

The mother came out of the house bewildered and screaming, "Don't hit my son, don't hit my son!" Youth 1 got out of the patrol car and, picking up a rock, rubbed, yelling, "Get off of my brother!" At this point, another car called in to assist pulled up. Seeing

this, Youth 1 dropped the rock and was then beaten down by the additional officers, one using a nightstick to his lower back.

The mother screamed for the officers to stop and in reply one returned with, "Shut up and get in the house before we beat you and bring you in, too." Both youths were then thrown into the patrol car as a crowd protested and were bemoaned in response by the officers.

The cars then sped off toward the police station, leaving behind a crowd of witnesses in the street.

At the station, the handcuffed youths were put into a holding cell. Turning to one of the officers, Youth 2 asked whether he was the one that had been kicking him. The officer stared down and replied, "No I was probably the one who was punching you."

The next day, Wednesday, Aug. 28, the two boys were bailed out. Youth 1, who was taken to the hospital with bruises to the lower back area, was given 10 different summonses, one being the operation of a motorcycle without registration or insurance. Youth 2, who was uninjured, was charged with bodily assault on the officers and abusive language.

Neither of the youths were read their rights.

Name withheld by request

## Letters to the Editor

## Times' editorial attacked for defending legal fees

To the editor:

Mr. Orechio, do your homework! Your editorial in defense of board of education attorney Larry Schwartz's legal fees was outrageous.

Mr. Schwartz's ability as a lawyer or his \$85 an hour fee were never questioned. The sincere people who took the time to attend the last board meeting attempted to point out that. When Mr. Schwartz's retainer was combined with his approved invoices, the total expenditure was \$90,000, a fee which I and many of my friends felt to be extremely high. It was then pointed out by board President Dr. Anthony D'Agostino that Mr. Schwartz's fees only added up to \$81,000 a year.

Well, Mr. Orechio, neither side was correct. When asked for total expenditure for legal fees covering the 1984-85 school year, board secretary Edward J. Appleton presented vouchers totaling \$85,228.50 and a retainer of \$10,000, bringing a grand total of \$95,228.50. It seems that Mr. Schwartz was very busy representing

the Belleville School System.

At \$80 per hour, Mr. Schwartz put in a total of 1,065 solid hours of work for the board of education or roughly six months of 40-hour work weeks. Mr. Schwartz is fortunate to have such a tireless law firm or else he would not be able to represent Belleville in addition to the five other school systems he handles.

Mr. Orechio, you might think that "Larry Schwartz's legal fees come cheap" and you might be bolstered in your defense by support from some board of education members, particularly Dr. D'Agostino, Felix Linante and Seymour Grossman, but the electorate of Belleville may judge otherwise. It's time that Belleville taxpayers' money be used for the betterment of our most precious possessions, our children, and not for over-paid lawyers or petty politicians who use the position as board of education member as a stepping stone to a commissioner's seat.

Richard Yanuzzi  
Greylock Parkway

## School board's bickering is 'healthy' for the system

To the editor:

At the last board of education meeting, which was Monday, Aug. 19, I was very pleased to see so many Belleville citizens in attendance. The people were comprised of various age groups, the young, middle-aged and senior citizens.

That's where the variation ends because with a few exceptions, they all had one thing in common. Their main purpose in being there was to question the board members about the legal fees for the board of education. The few exceptions that I made reference to were two members of the audience.

They seemed disturbed over the views of the rest of the people and referred to them as bickering so and so's. I was very happy when one woman got up and made mention of the fact that bickering is a healthy thing because talking is action.

The government of the United States, from the White House down to the smallest community in the country, is constantly bickering, expressing views, disagreeing and agreeing, like that woman in the audience said, "that's very healthy."

That's the strength of this beautiful nation of ours, freedom of speech, which you were trying to stifle. The people in attendance that night are the taxpayers of our town who are concerned about our school system and of course, our children. You seemed so disturbed over this bickering (as you put it) and this could be a very serious problem for you living in a democratic country, such as the U.S.A. because the only way you could remedy this problem is to live in a communistic country where bickering is absolutely forbidden.

Jackie Rega  
Belleville Avenue

## Golden Comments

By James R. Golden

Raw statistics now being compiled by the New Jersey Division of Taxation project a 4 percent, higher property tax for the state's 21 counties.

Figures show the total property tax bill in all 21 counties at \$5.3 billion, an increase of \$223 million from a year ago and \$547 million more than what property owners paid out in the previous year.

About half of that total is to support the local costs of the public schools; a quarter is for county government and the remainder for support of local government.

Every county has higher taxes this year statewide, local government property taxes to support county governments have gone up 4.5 percent from last year.

Local taxes went up 5 percent, while property taxes for support of local public schools went up 3.7 percent from the previous year.

These increases occurred despite state aid of \$4.4 billion pumped into the 21 counties, most of the 567 municipalities and all of the 650 school districts in the current fiscal year.

Officials claim the increases are necessary to keep pace with higher wages, expanded program and many state laws requiring local and county government to pick up the tab. It is also noted that the increase is just under the 5 percent limit on increased expenditures by local government.

The figures put out by the Local Tax Branch of the State Tax Division show that school taxes are at \$2.8 billion, an increase of \$100 billion, up \$56 million from last year and local government taxes at \$1.3 billion, a \$67 million increase.

For Essex County total tax, \$601 million, up \$20 million. School taxes, \$246 million, up \$7 million. County government tax, \$180 million, up \$12 million.

Much of this increased tax burden is heaped upon the shoulders of the local taxpayer because of the tight-fisted policies of Republican chief executives in both Washington and Trenton.

President Ronald Reagan has cut down on federal grants to states, counties and local governments and public schools while Gov. Thomas Kean, despite an overwhelming vote of both houses of the state Legislature, vetoed a bill sponsored by our state senator, Carmen Orechio, that would have had the state absorb the cost of the state court system, instead of the counties which sorely affects our property taxes.

Locally, we're alarmed at reading about \$90,000 fees being paid to a school board attorney and additional raises being given to select town workers even after 7.5 percent raises had been granted for the year and why, we inquire, must they be made retroactive to the first of the year?

Both the U.S. Constitution and the state constitution explicitly state a ban upon ex post facto laws.

A Kearny resident wrote in a Letter to the Editor in the Sunday Star-Ledger, "Our elected officials had better take a good look at the impending crisis. Education needs a shot in the arm. It does not need more bad publicity like the superintendent of a northern Essex County suburb (Narley) collecting a \$71,000 salary and on top of that is given a car (\$10,500 to boot)."

In Kearny, the taxpayers' are irate and up in arms over their property taxes being doubled after revaluation. People on fixed incomes don't get a raise and can't afford sharp tax increases.

Why is it that union workers have to give "givebacks" to avoid layoffs or settle for a meager 3 percent raise while politicians have no qualms about granting substantial raises to public employees and teachers and school supervisors?

Is it because they're "buying" votes with the taxpayers' money to gain votes and support of the employees to be re-elected? What do you think?



## New lunch program offered to elementary students this year

A new lunch program will be offered to elementary students in the Belleville School System this year.

Students will be served hot lunches in a newly developed system that improves taste and offers a larger variety of foods

at no extra cost to the taxpayers, Sherry Gray, Belleville food service director, said.

"Students will enjoy the flexibility of the new program which is called MenuMakers," Gray said. "We will serve about 110,000 lunches this year with the

new system."

The system which was used last year, served lunches in aluminum dishes, which performed properly, but didn't look as nice as the new white paper ones, Gray said.

"Our food contractor, Preferred Meal Systems, can now offer us hundreds of new menu combinations, since we can mix and match separate food components to better please the students and continue to meet necessary state and federal requirements, too," Gray said.

"Every child will be able to select from a full menu offering this year," she continued, "but if a certain food doesn't appeal to a student, he or she can refuse it at the cafeteria line, reducing any wasted food as well."

The new lunch system has been tested over the past two years, Mr. M. Patrick Costello, Preferred Meal Systems representative, said.

service. We can also work with school administrators to offer a much greater variety of nutritious foods."

A full lunch program, which includes meat, potatoes, vegetable and milk, will cost elementary students 95 cents - the same price as last year.

The following is a list of scheduled lunches for the elementary, middle and high schools:

**Elementary schools**

No lunches will be served Thursday and Friday, Sept. 5 and 6.

**Monday, Sept. 9:** hot dog, baked beans, frozen juice pop, hot dog roll, mustard and milk. Alternate: torpedo sandwich.

**Tuesday, Sept. 10:** fried chicken, hash browns, cinnamon apples, bread, margarine, cat-sup and milk. Alternate: cheeseburger and french fries.

**Wednesday, Sept. 11:** cheese pizza, french fries, frozen juice pop and milk. Alternate: water steak and cheese.

**Middle school**

**Thursday, Sept. 5:** french bread pizza or sausage and peppers or submarine or pastrami

on rye with potato rounds, cheddar pears and milk. Sub Base combo: Italian sub.

**Friday, Sept. 6:** cheesesteak on a roll or slice turkey on a kaiser roll or fishwich on a bun with french fries, fruited gelatin and milk. Sub Base combo: tuna sub.

**Monday, Sept. 9:** bacon, cheeseburger on a bun or pizza or toasted cheese sandwich with french fries, french fruit and milk. Sub Base combo: ham and cheese.

**Tuesday, Sept. 10:** chicken chow mein or barbecue ribbettes on a bun or steakwich in a pita with buttered rice, vegetable combo, pineapple chunks, fortune cookies and milk. Sub Base combo: cold cut combo.

**Wednesday, Sept. 11:** tacos with lettuce and tomatoes or pizza or spinach quiche with potato rounds, applesauce and milk. Sub Base combo: salami and cheese.

## McGreedy speaks out against false claims

Belleville Finance Commissioner Joseph McGreedy this week took strong objection to Essex County Executive Peter Shapiro's claim that his administration's keeping county tax rates down represents "a \$60 million tax break in Essex County."

McGreedy said he has researched tax records locally that "prove beyond a doubt that since Shapiro became county executive, county taxes paid by Belleville alone have increased by more than \$20 million."

McGreedy charged Shapiro with "misleading voters into believing that taxes have gone down and now he's telling voters throughout the state that he will lower the average homeowner's taxes by \$25."

"How can he reduce taxes for the state when we haven't seen any relief at all here in Essex County," McGreedy said.

Essentially, because property values in Essex County have doubled since 1978, the tax rate would have to be cut in half to lower county spending to where it was in 1978. Although the county rate has been lowered because of the increase in rates, the monies being raised constantly have been increased by the Shapiro administration, McGreedy said.

He made his remarks on OBC-TV Tuesday after reading reports in the Star-Ledger quoting Shapiro campaign releases on the county tax situation.

McGreedy also noted that Essex County's bonds were lowered from a double-A to an A-1 rating in May.

"The lower rating is simply another reflection of a weakening fiscal crisis in Essex County," McGreedy said.

McGreedy also noted that Essex County's bonds were lowered from a double-A to an A-1 rating in May.

McGreedy also noted that Essex County's bonds were lowered from a double-A to an A-1 rating in May.

McGreedy also noted that Essex County's bonds were lowered from a double-A to an A-1 rating in May.

McGreedy also noted that Essex County's bonds were lowered from a double-A to an A-1 rating in May.

McGreedy also noted that Essex County's bonds were lowered from a double-A to an A-1 rating in May.

McGreedy also noted that Essex County's bonds were lowered from a double-A to an A-1 rating in May.

McGreedy also noted that Essex County's bonds were lowered from a double-A to an A-1 rating in May.

McGreedy also noted that Essex County's bonds were lowered from a double-A to an A-1 rating in May.

McGreedy also noted that Essex County's bonds were lowered from a double-A to an A-1 rating in May.

McGreedy also noted that Essex County's bonds were lowered from a double-A to an A-1 rating in May.

### GYMNASTIC WORLD, Inc.

## REGISTER NOW. . .

### Fall Classes

#### Begin September 9th

- Mom & Me 1 yr - 3 yr.
- Special KinderGym
- Pre-Team Accelerated Class
- Rhythmic Gymnastics
- H.S. Team Workouts
- Boys & Girls
- Adult Workout
- Evaluation for Girls & Boys-U.S.G.F.
- All Olympic Apparatus
- Full Size Trampoline
- 6,000 Sq. Ft. Facilities

**1984 N.J.S.G.F. Class III & IV STATE CHAMPS**

**SPORTATM!**

A LICENSED NATIONAL GYMNASIUM INSTRUCTIONAL SYSTEM

**OPEN HOUSE**

Sat. Sept. 7th

10 a.m. - 1:00 p.m.

See our team exhibition & class video

(call for directions)

**GYMNASTIC WORLD, INC.**

263 HILLSIDE AVE.

**NUTLEY 867-1090**

Affiliated with Miss Maureen Dance Studio, Nutley

Birthday Parties Arranged

The Only Complete Professional Gymnastics Facilities & Programs in our area

As featured on NBC - Channel 4 News

## MISS ROSEANNA'S DANCE SCHOOL

Re-Opens for its 37th season

403 Broad St. Bloomfield

**REGISTER NOW**

Private and Class lessons will be conducted in Tap, Ballet, Jazz, Gymnastics and Aerobics

Registration Thursday & Friday Sept. 12th and 13th between the hours of 10:00 and 4:00 P.M. Register early as classes are limited

**STUDIO OPENS MON., SEPT. 16th**

We are NOW teaching **AEROBICS**

For Information call 743-5030

If no answer call 743-8712

Miss Roseanna is a member of the Associated Dance Teachers of New Jersey Dance Masters of America, Dance Educators of America • Fully Air Conditioned

### Parent-Child Fun

**BABY GARDEN**

Now in Teaneck & Clifton!

You're invited to experience a unique, creative parent-child play environment. Designed for your self a moment of child-size delights, and the delight it brings your child.

5 Age Groups:

- 4 months-4 years
- 45 minute classes
- \$69 12 weeks

**FREE GIFT**

...what a way to grow!

Call for free brochure 232-1699

Baby Garden is an independent program with no franchise contract. 1st year pre-registration by Sept. 13.

**OPEN HOUSE**

St. Peter's Episcopal

385 Clifton Ave.

Mon. Sept. 9

2:30 PM

6:30 PM

Tues. Sept. 10

10:11:30 AM

**Teaneck United Methodist**

201 DeGraze Ave.

Thurs. Sept. 12

2:30 PM

6:30 PM

Fri. Sept. 13

10:11:30 AM

# '85 Nutley 1.5 Mile Classic

## SUNDAY, SEPTEMBER 22

Sponsored by: **Nutley Savings**

AN IRISH ASSOCIATION

Co-sponsored by the Nutley Irish American Association, the Nutley Department of Parks & Recreation, Essex County Department of Parks, Recreation & Cultural Affairs.

**AWARDS**

**FIVE MILE RUN**

TROPHIES to first overall male and female (five mile run)

TROPHIES to first in each age group (men and women): 14 & under, 15-18, 19-24, 25-29, 30-34, 35-39, 40-49, 50 and over

MEDALS awarded to 2nd through 5th place in each age group (men and women)

MEDALS awarded to all finishers OVER 60 YEARS of age

**ONE MILE FUN RUN**

MEDALS awarded to the first five boys and girls in each grade (Grades 3 to 9)

EACH ENTRANT is eligible for PRIZES to be RAFFLED at END of 5 mile run

**RACE DIRECTORS:** Joseph Cunningham and Patrick Keating 235-0224

# MAKE NO BONES ABOUT IT.

The finest in Orthopaedic Surgery and Treatment is available right here at The General Hospital Center at Passaic!

For the treatment of bone, muscle, ligament and joint ailments, The Orthopaedic Department of The General Hospital Center at Passaic ranks second to none! This complete modern health-care facility employs the most advanced surgical techniques available, from the modern-day miracle of microsurgery, to advanced spinal surgery to the latest in hip, knee and other joint replacements. Our staff, highly respected in the medical community, utilizes the latest state-of-the-art equipment in diagnosis and treatment.

So, make no bones about it! The very finest in orthopaedic care is right here at The General Hospital Center at Passaic.

For more information, call our Orthopaedic Department at (201) 365-4448

**THE GENERAL HOSPITAL CENTER AT PASSAIC**

350 Boulevard • Passaic, New Jersey 07055 • (201) 365-4300

Your Hospital for a Lifetime.

### ENTRY FORM

In consideration of this entry being accepted, I hereby for myself, my heirs, executors, administrators, or legal representatives and successors, release and forever discharge the Nutley Irish American Association, the Nutley Savings & Loan Association, the Town of Nutley, the Essex County Parks Commission, the race officials, and all participating sponsors, from any and all claims, demands, suits, or actions, for injuries or damages that I may sustain as a result of my participating in this event. I also certify that I am over 18 years of age or that I am under 18 years of age, that this application has been signed by my parent or legal guardian, and I have trained sufficiently for this event and that I am in physical condition for this event.

Name: \_\_\_\_\_ (last) \_\_\_\_\_ (first) \_\_\_\_\_

Age: \_\_\_\_\_ Sex: \_\_\_\_\_

Address: \_\_\_\_\_ (city) \_\_\_\_\_ (state) \_\_\_\_\_ (zip) \_\_\_\_\_

Race entered: \_\_\_\_\_

Signature: \_\_\_\_\_

5 mile \_\_\_\_\_ 1 mile \_\_\_\_\_ BOTH \_\_\_\_\_

Did you run in last year's race? Yes \_\_\_\_\_ No \_\_\_\_\_

Parent's signature (if under age 18) \_\_\_\_\_

**FREE T-SHIRTS to all PRE ENTRIES**

(To post entries while supplies last)

T-Shirt size: \_\_\_\_\_

SM \_\_\_\_\_ LGE \_\_\_\_\_

MED \_\_\_\_\_ XLGE \_\_\_\_\_

# Events in the Area

## Reunion at St. Clare's Oct. 20

St. Clare Parish, 69 Allwood Road, Clifton, will celebrate the silver anniversary of its school Oct. 20 with a Mass of Thanksgiving at 4 p.m.

The festivities will continue with a dinner dance and reunion at the Westmont Country Club, West Paterson, 6 to 10 p.m.

For more information, call Father Collins or the secretary at 777-7588.

## Ethiopian telethon Sept. 28

The Project Ethiopia Committee, chaired by Councilman John Crecco and John Bonnet, will hold a telethon 10 a.m. to 8 p.m. Sept. 28 in the theatre of the Bloomfield Public Library, 90 Broad St.

The committee has raised \$7,000 of its \$15,000 goal to date. All funds are channeled through Catholic Relief Services. Donations may be mailed to Project Ethiopia, care Bloomfield Public Library, 90 Broad St., Bloomfield, N.J., 07003.

## Rummage, bake sale Sept. 7

Brookdale Reformed Church, 10 Bellevue Ave., Bloomfield, (at the entrance to Brookdale Park) will hold a rummage and bake sale 9 a.m. to 4 p.m. Sept. 7.

The Church Women's Club will sell baked goods and bargains. Admission is free.

## Trip to Amish country Sept. 21

Bloomfield Knights of Columbus and Columbiettes are planning a day trip to the Amish country in Lancaster, Pa. Sept. 21. Donation is \$31 per person.

The fee includes bus transportation, breakfast, bus tour and supper at God and Plenty Restaurant. Call Rose Ruffalo at 743-8688 for reservations.

## Devils, DJ's face off Sept. 14

A softball game to benefit the Association of Blind Athletes of New Jersey will be played 2 p.m. Sept. 14 at Smith Field, Rt. 46 and Baldwin Ave., Parsippany. Teams competing are the WNEF-FM Radio DJ's versus the New Jersey Devils Ice Hockey Team.

Donation is \$3 for adults and \$1 for children under 12. For tickets, call Rose Ruffalo in Bloomfield at 743-8688 or Joe Ruffalo in Belleville at 759-3622.

## Festival in the Park Sept. 8

The Nutley Historical Society, the Kingsland Manor Trust and the Nutley Parks Dept. will sponsor the 12th annual Festival in the Park 10 a.m. to 5 p.m. Sept. 8 in Memorial Park which runs from Vreeland Avenue to Chestnut Street, just above Passaic Ave.

For table reservations, call Doug Eisenfelder at 667-3013 prior to Sept. 7. Food and refreshment stands will be scattered through the park and space will be allotted for dealers with flea market items, crafts, artwork, antiques, "attic treasures" and homemade baked goods. Local clubs, church groups and community service organizations will be showcased and the Nutley Little Theatre will present Neil Simon's "Visitor from Forest Hill" at 11 a.m., 1 and 3 p.m. Rain date is Sept. 15.

## Sacred Heart planning picnic

Sacred Heart Church will hold a "Can You Top This" picnic 10 a.m. to 8 p.m. Sept. 14 on the school grounds, 683 Bloomfield Ave., Bloomfield. Rain date is Sept. 15.

Tickets at \$3 per person and \$10 per family of five, will be sold at the rectory. Tickets purchased before Sept. 8 will be exchanged on the day of the picnic for strips of tickets worth \$5 and \$20 respectively. Tickets purchased after that date will be \$5 per person and \$15 per family of five and will be exchanged at the same rate.

To volunteer to help or for more information and tickets, call the rectory at 748-1800 or Ruth Miller at 748-4261.

## Arts, crafts, flea market Sept. 29

The Nutley Parkside Apartment Tenants Association will sponsor its first annual arts and crafts sale and flea market 10 a.m. to 6 p.m. Sept. 29 in the apartment recreation hall, 7 Williams St.

Table reservations are available on a limited basis to dealers. Call Emma Luhn at 661-5282 after 10 a.m. for details and table reservations.

## Elks benefit golf outing Sept. 13

Nutley Elks Lodge is sponsoring a benefit golf outing Sept. 13 at Pascack Brook Country Club, Riverdale. Proceeds go to the Lodge's Crippled Children Committee fund.

Tickets are available at the lodge at 242 Chestnut St. or by calling Edward Dwyer, chairman, at 595-2512.

## Commissioner's brunch Sept. 29

The Friends of Belleville Commissioner Ralph J. DiRuggiero will sponsor their second annual Brunch Sunday, Sept. 29, at 10 a.m. at the Chandelier, 340 Franklin Ave., Belleville.

Tickets will be available after Labor Day.

## Flea market cake sale Sept. 14

The Belleville Reformed Church, Main and Rutgers streets, will sponsor an outdoor flea market and cake sale Saturday, Sept. 14, from 10 a.m.-4 p.m. in the church parking lot.

For information, call 759-2207. Refreshments will be available.

## Fourth antique fire show Sept. 7

The Essex County Department of Parks, Recreation & Cultural Affairs and the Antique Fire Association of New Jersey will co-sponsor its fourth annual show Saturday, Sept. 7 at Verona Park, Bloomfield Avenue in Verona.

The show will feature apparatus and fire memorabilia displays, fastest water contest, hose rolling contest, mid-night alarm contest and demonstrations in "stop, drop and roll."

Prizes will be awarded. Music will be provided by a dixieland band.

Admission is free.

## MIDS meets Sept. 18 in Nutley

The Essex County Chapter of MIDS will meet 8 p.m. Sept. 18 at 15 Clover St., Nutley.

MIDS is a self-help group which offers friendship and understanding to parents who have suffered a loss due to miscarriage, infant death or stillbirth. For additional information, call Lisa Calabria at 235-1364 or Bonnie Smith at 239-8467.

**Back To School Specials**  
Strudel • Peach Cake  
Plum Cakes • Apple Crumb  
French Nut • Big Mac  
Meyers Famous Cheesecake  
Rocky Road Cakes

**Lunch Box Specials!**  
A large variety of home  
baked breads - NO  
PRESERVATIVES - a  
healthy way to make your  
kids a delicious lunch.

**Look For Our  
"Bread Fest" Sale  
In September**  
• Homemade Ice Cream  
• Sunday Buffet 10am-8pm  
\$6.95 per person

**MEYERS  
EUROPEAN STYLE  
OUTDOOR CAFE**

**OPEN 7 DAYS**  
- Daily Specials -  
Full Course Breakfast,  
Lunch & Dinner  
Great European Desserts  
& Pastries  
Try Our Varieties  
of Cappuccino

**MEYERS KIELBS BAKERIES**  
227 FRANKLIN AVE. • NUTLEY • 667-8587

382 WASHINGTON AVE  
BELLEVILLE • 759 1673

519 FRANKLIN AVE  
NEWARK • 482 0585

## Swim club sets tryout dates

The Phoenix Aquatic Club, a year-round swim club offered to residents in the Belleville, Bloomfield and Nutley area, has scheduled fall tryouts at the Montclair-Kimberly Lloyd Road campus in Montclair.

The dates are as follows: Thursday and Friday, Sept. 5 and 6, 6:30-8 p.m.; Saturday, Sept. 7, 9:30-11 a.m.; Monday, Sept. 9, 9:30-11 a.m. and 6:30-8 p.m.; and Tuesday, Sept. 10, 6:30-8 p.m.

The Phoenix Aquatic Club offers instruction, training and competition.

For information, call Coach Andy Lehner at 746-5627, or David Fowler at 744-6197.

## Barbershop quartets sing Sept. 15

Tickets are now available for a barbershop show featuring two internationally renowned barbershop quartets from Louisville, Ky. to be held 2:30 p.m. Sept. 15 in Montclair High School auditorium.

The show is sponsored by The Mountaineer Hospital in cooperation with the Montclair Chapter SPEBSQSA. An Afterglow Party for patrons and sponsors will immediately follow the show. Tickets are available by calling 429-6130.

## Knights' Italian Night Sept. 28

Belleville Council, Knights of Columbus 835, 94 Bridge St., will open its fall social season with Italian Night, Sept. 28. For tickets, call chairman Pete Russomanno of Grand Knight James Kiernan.

## Roche retirees meet Sept. 14

The Roche Retiree Club will meet 1:30 p.m. Sept. 14 in the auditorium of building 76 in the Roche complex in Nutley.

Refreshments will be served in the cafeteria following the meeting.

## Retired group plans meeting

North Essex Chapter 57 of the American Association of Retired Persons will meet 1 p.m. Sept. 11 in the auditorium of the Bloomfield Presbyterian Church on the Green. Members are urged to bring a guest.

## Flea market set at Grace Church

Grace Episcopal Church, 200 Highfield Lane, Nutley, will sponsor a flea market 10 a.m. to 4 p.m. Sept. 28 on the church lawn.

Spaces are available for dealers and crafters at \$15 per table. Refreshments will be available. For information, call 667-9125.

## Slide competition at camera club

The Tri-County Camera Club which meets in the Nutley Historical Museum, 65 Church St., will hold a nature slide competition Sept. 10. Judging will be by Harold Gabriels.

## Chinese auction planned Sept. 15

The Leisure Time Club of St. Clare's Church, 59 Allwood Road, Clifton, will sponsor a Chinese auction Sept. 15 at the Parish Center. Doors open at 2 p.m. and a \$3 donation includes refreshments.

Proceeds will benefit the building fund of the church.

## New singles group is forming

The first meeting of the Singles Connection, a group for mature single, widowed, divorced or separated persons, will be held 8 to 11 p.m. Sept. 5 in the parish hall of Grace Episcopal Church, Highfield Lane and North Road, Nutley.

The group will meet the first and third Thursday of each month for rap sessions and refreshments and to plan social events. For more information, call the church at 235-1177.

## Flea market, attic sale Sept. 7

Covered Bridge Squares Dance Club of Nutley will hold a flea market, attic and bake sale 10 a.m. to 4 p.m. Sept. 7 at the Nutley Museum, 65 Church St.

Rain date is Sept. 14. For information, call 759-0864.

289 Stuyvesant Avenue, Lyndhurst, N.J. Phone: 460-1088

**FALL SESSION 1985**

Take advantage of a special offer:  
Eight weeks of unlimited dance classes for \$100.

Regular class card: 8 classes for \$50.

Classes in Ballet, Jazz, Tap, Modern, Acting, Children, Teens, Adults, Professions.

Registration: Sept. 5, 6, and 7

\*Acting students call for an interview with James Laurence.

**FIVE TIME WINNER OF THE "GARDEN STATE TALENT EXPO" Dancers' Credits**

- "Cats" - Broadway
- Bob Fosse's "Dancin'" - National Touring Co.
- Broadway's "Merlin"
- Midnight Madness Cabaret Review
- Atlantic City Bailly's Park Cabaret "Third Edition - More On the Loose"
- "Finnian American Show" - Japan, Korea, Portugal, Spain
- Bob Fosse's "All That Jazz"
- The American Dance Machine - Austria and Germany Tour
- New York State Theater
- Metropolitan Opera House
- Club Soda, New York
- Harrah's Casino in Atlantic City
- Holmes in San Juan, Puerto Rico, and Miami
- Shawnee Playhouse, Delaware
- Surfright Dinner Theater
- Theater By The Sea
- Carousel Dinner Theatre - Ohio
- Coastlight Dinner Theater - Connecticut
- The Mont Louis Elton and Dance Ensemble
- The Contemporary Dance Company
- I.B.M. Industrial
- Commercial Sales - The Pepsi Cola, Oreo Cookies
- "The Fantasticks"
- National Touring Company
- "Say Hello to My ex" with Donald O'Connor - Canada
- "Guest Chair Girl" at Montclair State College's "Dance Festival"
- "Joe and the Review" - Arabia
- Chorus in "Crossroads Cafe" - Off Broadway Musical.

**MAKE YOUR DANCE DREAMS COME TRUE!**

**SAVE NOW AT JOHNSON!**

**7.7%\* A.P.R.**

**FACTORY AUTHORIZED**

LOWEST GMAC FINANCING RATE EVER!  
SAVE HUNDREDS ON NEW CENTURYS • REGALS and ELECTRAS. Del. by Oct. 2

Just Minutes From You! Call for details. \*See dealer for restrictions. Offer good on new vehicles only. Excludes taxes, title, license, and other available equipment.

<b>CENTURY CUSTOM COUPE</b> w/Opt.: t/glass, mats, dr. grds., pulse wipers, rear defog., air cond., remote control, mirrors, tilt wheel, wire wheel covers, w/w radials, etc. stereo, radio, pwr. antenna, custom interior, w/sid. front wheel drive, 4 cyl., power steering & brakes, & much more! This one in stock. No. 8664.	<b>\$10,557</b>
<b>CENTURY CUSTOM SEDAN</b> W/Opt.: t/glass, mats, dr. grds., pulse wipers, vinyl top, rear defog., air cond., remote control, mirrors, tilt wheel, w/w radials, etc. stereo, radio, custom interior, w/sid. front wheel drive, 4 cyl. pwr. steer. & brakes, & more! This one in stock. No. 8658.	<b>\$10,624!</b>
<b>REGAL 2 DR. COUPE</b> W/Opt.: t/glass, mats, power wind., dr. grds., pulse wipers, rear defogger, air cond., rem. ctr., mirrors, tilt wh., wire wheel covers, etc. AM/FM stereo cass., pwr. ant., custom interior, w/sid. V-6 auto. trans, power steer. & brakes, white wall radials, deluxe wheel covers & more! This one in stock. No. 8559.	<b>\$11,247!</b>
<b>ELECTRA PARK AVENUE</b> SEDAN, Silver w/Blue Int., w/Opt.: pwr. trunk, rear defog., dr. grds., illum. door locks, gran tour., susp., halo hdlings., AM/FM stereo cass., frt. & tr lamp monitors, pwr. ant., w/Sid. V-6, MFI fuel injd., auto. w/O.D., p. steer brks., pwr. winds locks, tilt wh., cruise, power seat, air cond., w/w radials, t/glass & more. This one in stock. No. 8647.	<b>\$15,659!</b>
<b>ELECTRA PARK AVENUE</b> SEDAN, light blue w/Blue Int., w/Opt.: dec. seat recliner, elec. trunk lock, dr. grds., rear defog., illum. door lock, wire wheel cov., cornering lamps, etc. AM/FM stereo cass., fr. & tr lamp monitors, p. ant., w/Sid. body stripes, V-6 MFI fuel inject., auto. trans., w/overdrive, pwr. steer. & brakes, pwr. winds locks, tilt wheel, cruise, pwr. seat, air. w/w radials, t/glass, & more! This one in stock. No. 8645.	<b>\$15,785!</b>
<b>ELECTRA PARK AVENUE</b> SEDAN, DK. Blue/Blue Int., w/Opt.: pwr. trunk, rear defog., illum. door locks, gran tour., wire wheel covers, halogen hdlings., etc. AM/FM stereo cass., frt. & tr lamp monitors, pwr. ant., w/Sid. body stripes, MFI fuel injected V-6 auto. trans. w/overdrive, pwr. steering & brakes, pwr. wind locks, tilt wh., cruise contrl., p. seat, air cond., w/w radials, t/glass, & more! This one in stock. No. 8661.	<b>\$15,656!</b>
<b>1983 OLDSMOBILE TORONADO</b> 2 dr., V-8, auto trans., PS, PB, Air, P.W. Flocks, 4 door pwr. seat, cruise control, tilt wh., AM/FM stereo w/cass., p. ant., pwr. trunk, wire wheels, w/radials, elec. sun roof, 20,004 miles.	<b>\$13,395</b>
<b>1982 BUICK REGAL</b> V-6 auto trans. power steering and brakes, am fm, vinyl roof, 2 door, 32, 816 miles.	<b>\$6,995</b>
<b>1981 BUICK ELECTRA LIMITED</b> V-8 auto trans. power steering and brakes, air conditioning, power windows and locks, 4 door, 53,675 miles.	<b>\$7,800</b>
<b>1983 BUICK ELECTRA ESTATE WAGON</b> V-8 auto trans. pwr. steering and brakes tilt steering wheel cruise control, pwr. lock, pwr. windows and more! 41,335 miles.	<b>\$10,995</b>
<b>1981 BUICK LEBESBE</b> V-6 auto trans. power steering and brakes, vinyl roof, am fm, power windows and locks, 4 door, 22,327 miles.	<b>\$4,895</b>
<b>1981 BUICK CENTURY LIMITED</b> V-6 auto trans. power brakes and steering, air conditioning, vinyl roof, 4 door, am fm, 54,837 miles.	<b>\$5,895</b>

**John JOHNSON Buick**

prices excl. taxes & MV fee

Greenwood Ave. • Next to Larchmont Plaza  
MONTCLAIR • 746-5700

• Servicing •  
The Montclair Area For Over 15 Years!

SERVICE • PARTS  
LEASING • RENTALS

# Lucille Regina Detlaff wed to Michael Edward Hahula



Mr. and Mrs. Michael Hahula - nee Lucille Detlaff

Lucille Regina Detlaff, daughter of Mr. and Mrs. Victor Detlaff of Bloomfield, was married recently to Michael Edward Hahula, son of Mr. and Mrs. Theodore J. Hahula of Belleville.

The Rev. Anthony Mroz performed the double ring ceremony in St. Valentine's Church, Bloomfield. Edward Kosinski, uncle of the bride and cellist with the Bloomfield Symphony, was soloist. A reception followed at White Eagle Manor, Bloomfield.

The bride, escorted by her father, was attended by her sister, Teresa Detlaff as maid of honor. Bridesmaids were Erica Kosinski of Painesville, Ohio, cousin of the bride, and Rosemarie Shea of Belleville.

Theodore C. Hahula served his brother as best man with Mark Stabinski of Bricktown, cousin of the groom and William Shea of Belleville ushering.

Mrs. Hahula, a graduate of Bloomfield High School and The Berkeley School, received paralegal certification from The First School of Secretarial and Paralegal Studies. She is employed as a legal assistant and attends Montclair State College.

Mr. Hahula, an alumnus of Belleville High School and Stevens Institute of Technology, earned a master of science degree at the same institution where he will begin work on a doctorate this fall. He is with the Kearfott Division of the Singer Co., Little Falls.

The couple honeymooned in Greece following the Oct. 20 nuptials and have made their home in Bloomfield.

## Geralynn Christiano to wed Ronald Roma next summer

Ruth Ann Ciallella and Frank Christiano announce the engagement of their daughter, Geralynn, to Ronald Roma, son of Mr. and Mrs. Ronald Roma. Miss Christiano is an alumna of Belleville High School. Mr. Roma is a graduate of Bloomfield Tech.

The couple will be married next August.

### Dancesation

*The Ultimate In Dance*

Ballet \* Tap \* Jazz \* Acrobatics  
 \* Aerobic & Stretch \*

Ages Pre-School thru Adult  
 - Registration Hours -  
 August - Tuesday & Wednesday  
 10 AM - 6 PM

Director - Susan Marrazzo DeVincenzo

382 Union Avenue    Classes Start Sept. 7th...  
 Belleville, NJ 07000    751-5250

## Stork Club

Mary E. Knowles

A first child, a daughter, Marycatherine Elizabeth, was born to Mr. and Mrs. James Mark Knowles of Belleville Aug. 8 at Mountsides Hospital, Glen Ridge. Birth weight was 7 pounds, 7 ounces.

Mrs. Knowles is the former Mary-Ellen Klehm, daughter of Mr. and Mrs. Robert Klehm of Newark. She is a secretary at Rutgers University, Newark. Mr. Knowles, son of Mr. and Mrs. Frank Gurrieri of Belleville and Samuel D. Knowles Sr. of North Arlington, is a grinder with Perfection Knife Grinding Co. Inc., Belleville.

John A. Suarez

A second child, a son, John Austin, was born to Mr. and Mrs. John Suarez of Fairfield Aug. 11 at St. Barnabas Medical Center, Livingston. Birth weight was 7 pounds, 12 ounces. He joins Adam John, two.

Mrs. Suarez is the former Jeanne Austin, daughter of Mr. and Mrs. Frederick Austin of Belleville. Mr. Suarez, son of Mr. and Mrs. Augustine Suarez of Ft. Pierce, Fla., is a sales representative with 3M Company, Caldwell.

Erica L. Barbella

A third child, a daughter, Erica Lee, was born to Mr. and Mrs. Barry Barbella of Belleville July 29 at Clara Maass Medical Center, Belleville. Birth weight was 7 pounds, 5 ounces. She joins Thomas, four and Christopher, three.

Mrs. Barbella is the former Linda Graziano, daughter of Mr. and Mrs. Samuel Graziano of Belleville.

## Junior Woman's Club plans outdoor flea markets and sales

The GFWC Junior Woman's Club of Belleville recently sponsored two social events for club members.

The first was a gathering of members at the Jade Fountain Restaurant for the club's annual "Ladies Night Out" dinner party in July.

In August, members and their children met for an afternoon picnic in the park.

The club is sponsoring two outdoor flea markets at School 7, Jorammon Street, on Sept. 8 and 15.

The annual membership tea is scheduled for Sept. 23, 8 p.m., at the clubhouse, 51 Rossmore Place.

For the month of October, a hoagie sale is planned as well as a dinner-dance at the Cameo Restaurant in Garfield. For ticket information, call 759-6529.

Women between the ages of 18 and 35 interested in becoming a member of the Belleville Junior Woman's Club are asked to call the membership chairman at 759-4836.

## Grand Union launches campaign to aid statue

The Grand Union Company, an official sponsor of the Statue of Liberty-Ellis Island Restoration Project, has begun a special recycling campaign in its 44 New Jersey and Pennsylvania stores to help raise funds to benefit Lady Liberty.

Special collection bins have been placed in the front of all Grand Union stores and customers are being asked to donate at least one empty aluminum beverage can on each shopping visit. The money received from recycling the aluminum goes directly to help save our nation's most prized symbol of freedom and liberty.

Every time a customer

purchases a Liberty Brand product, part of the purchase price is contributed by Grand Union to the Statue of Liberty.

On the back of Grand Union's Price Finder for Specials booklets each week will be four "Liberty Coupons." Customers will benefit from the extra cents-off coupons as will Miss Liberty, since each coupon represents another contribution to the restoration fund.

Grand Union is fully committed to the restoration of Lady Liberty. The aluminum can collection was designed to give the community an easy way to take part in restoring the Statue.

## Diets Made to Order

Complete Nutrition Counseling

- ALL MEDICAL DIETS
- QUICK WEIGHT LOSS
- SPECIALLY DESIGNED DIETS FOR CHILDREN & ADOLESCENTS
- DIETS FOR GOOD HEALTH

MARY ANN ZIMMERMANN, MA, R.D.

Registered Dietitian/Nutritionist

6 POMPTON AVENUE, SUITE 15 CEDAR GROVE • 239-5663

SAVE \$3.00
SAVE \$3.00

### For Dogs Only

Accredited Professional  
All-Breed Grooming

Save \$3.00 on pet's first grooming  
and receive a Free Bone.

Offer good with this coupon only — 9/30/85

## COUPON

SAVE \$3.00
SAVE \$3.00

### GRAND OPENING

AUGUST 19th

272 Washington Avenue

BELLEVILLE 751-9798

## SECURITY NATIONAL'S

# NEW 24 HR. AUTO LOAN

## 11.75%

ANNUAL PERCENTAGE RATE

*"NOW THAT'S FAST"*

## Make the toughest school courses easy.

Reg. Price \$495.00  
 Sale Price \$329.00

### ADLER™ SATELLITE III

#### Electronic Typewriter

Go to the head of the class with this 3 type pitches • Easy changing ribbon • Office-style personal electronic cassettes • Types 14 characters per se • Typewriter • Multi-line automatic cor-cond • Computer interfaceable • Easy center memory • Automatic centering, transportable at 22 lbs. • Underlining, decimal alignment, paragraph indent, paper insertion • Fast, quiet interchangeable print wheels with foreign language accents, punctuation

Come in today for a demonstration

**Selective BUSINESS MACHINES**

BACK TO REGULAR BUSINESS HOURS

HOURS: Mon. 9-8 • Tues. - Fri. 9-6 • Sat. 9-3

393 FRANKLIN AVE.  
 NUTLEY, N.J. 07110  
 235-1500

### STOREWIDE LIQUOR DISCOUNTS

CASH & CARRY • LIQUOR FOR OFFICIALS • SPECIALTY LIQUORS • BEER & WINE • ALL ADVERTISED BEERS SOLD OFF THE FLOOR WARM • PRICES EFFECTIVE WED. SEPT. 4 • EXCEPT TIMES SEPT. 12, 1985

#### SPECIALS!

PRICES IN THIS AD HAVE BEEN SET BY HELLER & HELLER, NUTLEY, N.J.

- DEWAR'S WHITE LABEL 4.99
- JOHNNIE WALKER RED 12.99
- CUTTY SARK 4.99
- SEAGRAM'S 3.99
- SMIRNOFF VODKA 7.99
- BACARDI SILVER 4.99
- GORDON'S GIN 4.99

#### FROM OUR WINE CELLAR

ALL ADVERTISED BEERS SOLD OFF THE FLOOR WARM

- DUBOUEF BEAUJOLAIS 4.99
- DUBOUEF POUILLY FUISSE 12.99
- MOUTON CADET 4.99
- CHATEAU D'AUDROS 3.99
- GALLO HEARTY BURGUNDY 7.99
- CARLO ROSSI CHABLIS 4.99
- GORDON'S VODKA 8.99

### TUBORG BEER

With this coupon only Limit one (1) per customer. Expires Sept. 10, 1985

## 5.99

24 12oz. BOTTLES (NS-8)

### NUTLEY

HELLER & HELLER OF NUTLEY 200 FRANKLIN AVE.

667-2677

OTHER LIQUOR VALUE STORES LOCATED THROUGHOUT NEW JERSEY

We reserve the right to limit quantities while they last. Not responsible for typographical errors. Products and prices may not be available at all other stores. Accurate prices include state sales tax.

### SECURITY NATIONAL BANK & TRUST COMPANY of NEW JERSEY

FOR MORE INFORMATION CALL THE NUTLEY OFFICES:

Joanne M. Paulson, A.V.P.  
 Branch Manager  
 213 Harrison Street  
 (201) 661-5110

Diane B. Gruber, A.C.  
 Branch Manager  
 431 Kingsland Street  
 (201) 661-5121

MEMBER FDIC  
 AN EQUAL OPPORTUNITY LENDER



# BHS Band marches to the beat of West Side Story

Photos by Michelle Jeannotte



Marching Saxophone Players



Sharing Notes



Practice Makes Perfect



Silbert Leads On



Keeping a Watchful Eye



The Lone Twirler



Marching to the Beat



Waiting to Move On



Piping Piccolos



Saxophone Soloist

For smokers who prefer the convenience  
of five more cigarettes per pack.



Now, famous Marlboro Red and Marlboro Lights  
are also available in a convenient new 25's pack.

# New Marlboro 25's

Warning: The Surgeon General Has Determined  
That Cigarette Smoking Is Dangerous to Your Health.

Lights: 10 mg "tar," 0.7 mg nicotine - Kings: 16 mg "tar," 1.0 mg nicotine, av. per cigarette, FTC Report Feb '85

Not available in some areas. © Philip Morris Inc. 1985

# Belleville Public Library adds films to its 16 mm educational collection

The Belleville Public Library, 221 Washington Ave., has added a number of films to its 16 mm film collection for groups and organizations interested in using them.

To take out films, patrons must have a Belleville Library card.

Some of 16 mm films added to the collection include:

- "Aquariums." Color, 20 min. Norman Bean Film. A discussion of the environment of an aquarium. Good for science classes.

- "Animal Friends." Color, 10 min. The friendship between a cat and a kitten is portrayed in this simplistic film. The kitten comes across a tortoise and flowers.

- "Animal Habitats." Color, 10 min. BFA Educational Media. The relationship of animals to their environment is explained in this colorful film.

- "Chinese Art." Color. Excellent history of Chinese art.
- "Care of the Young." Color, 20 min.

- "Exploring Relief Printmaking." Color, 20 min. A vivid film, discussing the four major types of relief printing. Gives excellent examples for your own art projects.

- "Farm Babies." Color, 10 min. Film Associates of California. Shows typical farm animals, such as cows, sheep, pigs, horses, etc. Good for small children.

- "Ideas for Art." Color, 19 min. Syracuse University. From books and the world around us, ideas in art are expressed. Ideas for art projects are expressed also in this film.

- "Painting - The Creative Process." 20 min. Film Associates. According to the artist in the film, the works of an artist are in a sense autobiographical.

Film examines textures, structures of nature and how they can influence painting.

- "Water Pollution." Color, 10 min. A discussion of the varying causes of water pollution.

- "Wild Animal Families." Color. Film Associates of

California. This is a delightful color film of bison, prairie dogs, bears, chipmunks, geese and porcupine for young children.

## Georgeann Hoffman designated certified fund raising executive

Georgeann E. Hoffman, director of development and public relations at Clara Maass Medical Center in Belleville, has been designated a Certified Fund Raising Executive (CFRE) by the National Society of Fund Raising Executives (NSFRE).

CFRE status indicates that Ms. Hoffman has achieved an advanced standard of tenure, performance, education, knowledge and service to the fund-raising profession.

Certification is for a three-year period. To become certified, a candidate must possess an accepted level of fund-raising experience (five years, full-time); be successful in helping to raise a significant amount of money for non-profit organizations; and contribute to the advancement of fund raising and philanthropic management. In addition, each candidate must pass a written exam which tests fund-raising skills and knowledge in all aspects of the field.

The National Society of Fund Raising Executives is an educational organization based in Washington, D.C., with membership of more than 5,500 professional fund raisers.



New Kiwanian - Richard Bradley (second from left) was recently inducted into the Kiwanis Club of Belleville. With him are John Campi, Kiwanis member Vincent Sorrentino, past lieutenant governor and inducting officer, and John Iannuzzi, club president.



Umberto's Corner

Dear Patrons of Umberto's of Naples:

Thanks to you, we will soon be moving into a wonderful new salon located down the street from our present location.

As a result of this, we are looking to expand our staff of beauticians and experts in nail, sculptures and other areas are needed.

If you would care to apply for these positions please call: 759-4900. We are sure you would enjoy working in our new and modern surroundings.



### POSSIBLE SIGNS OF PINCHED NERVES

- Headaches/dizziness
- Whiplash
- Neck pain tight muscles
- Shoulder pain
- Pain down the arms
- Numbness in hands
- Low back pain hip pain
- Sciatica
- Leg pain numbness
- EMERGENCIES TREATED ANYTIME
- MOST INSURANCE ACCEPTED

FAMILY FEES AVAILABLE  
MOST INSURANCE  
ACCEPTED

DR. RALPH J. DI MAJO  
Chiropractor  
625 Joramoun St. Belleville  
751-8805

### Hypnosis

Stop Smoking • Lose Weight  
Eliminate Phobias

CLINICAL HYPNOSIS & SUPPORTIVE COUNSELING

CALL FOR CONSULTATION:  
759-0110

Clara Maass Professional Center  
Belleville, N.J.

UMBERTO  
OF NAPLES  
547 Washington Ave.  
Hair Cutting & Collure  
549 Washington Ave.  
Unisex Extension  
Haircutters  
Belleville, N.J.  
FREE PARKING  
759-4900  
OPEN SUNDAYS

## ORTHODONTICS

AFFORDABLE BRACES  
FOR CHILDREN & ADULTS

CONVENIENT HOURS  
(EVENINGS TOO!!)

DENTAL  
INSURANCE  
WELCOME

SECOND OPINIONS PROVIDED

NEVER A CHARGE FOR CONSULTATIONS

DR. MICHAEL B. FITZPATRICK

484 Washington Ave. Belleville

759-2173

### Miss Maureen

Dance Studio

EXPERIENCE!!!! is the BEST teacher

OUR ORIGINAL "TAP"erobics!  
It's new! It's different! Anyone can do it. You do not have to be a tap dancer. Have fun while improving your physical fitness, coordination and timing. (Call for free class on Monday, September 9 at 7:30 p.m.)

- "Dance Combo" For the Gymnast
- Adults as well as Teens & Children's Classes
- Special Pre-School Programs
- Children's Workshop
- Pointe-Tap
- Gymnastics-Jazz-Ballet

REGISTER NOW!

Every Wed. & Thurs.  
1:00 to 5:00 p.m.

Studio re-opens Mon. Sept. 9

156 Franklin Ave., Nutley

Member: Dance Educators of America,  
Professional Dance Teachers Assoc.

667-4618 • 667-1447

We are affiliated with Gymnastic World Inc., Nutley

Dream it  
Become it

## Judge a college by its graduates. SAINT PETER'S COLLEGE The Evening-Weekend Session

Many of you may already know Saint Peter's College, because Saint Peter's has graduates in just about every walk of life. Perhaps your doctor, your dentist, your accountant, or your teacher is a Saint Peter's graduate. Maybe even your attorney, your communications specialist, or your computer programmer might be an alumnus or alumna of the College. The point is that New Jersey's Jesuit College has graduates in virtually every business, scientific, professional, and artistic field you could imagine.

Your Saint Peter's College degree — plus your imagination — will offer you unlimited successes. Let the St. Peter's pros guide your future.

To find out more about our programs, people, and opportunities fill in the coupon and mail it today. Can't wait? Then call us at

(201) 333-4400, Extension 504. Fall Trimester Classes begin September 9, 1985.



### BACHELOR'S DEGREES

#### COLLEGE OF ARTS AND SCIENCES

Computer Science  
Data Processing  
Mathematical Economics  
Economics  
English  
History  
Psychology

Elementary Education  
Liberal Arts  
Nursing  
Philosophy  
Social Science  
Urban Studies

#### SCHOOL OF BUSINESS ADMINISTRATION

Accountancy  
Economics  
Business Management  
Health Care Management  
Marketing Management

### ASSOCIATE'S DEGREES

Public Policy  
Banking  
Data Processing  
Marketing Management

### CERTIFICATE PROGRAMS

Computer Programming  
Business Systems  
Management and/or Marketing  
Word Processing



New Jersey's Jesuit College

Saint Peter's College is an Affirmative Action/Equal Opportunity Employer. It does not discriminate on the basis of sex, race, marital status, color, religion, age, national origin, physical handicap, or veteran's status.

Ms. Coleen J. Gallagher  
Director of Evening Admissions  
Saint Peter's College  
264 Kennedy Boulevard  
Jersey City, New Jersey 07306

Please send me information on the Saint Peter's College Evening-Weekend Session. I understand the Fall Trimester begins September 9, 1985.

Name \_\_\_\_\_  
Address \_\_\_\_\_  
City \_\_\_\_\_ State \_\_\_\_\_ Zip \_\_\_\_\_  
Telephone (\_\_\_\_) \_\_\_\_\_







Look for our colorful flyer in your newspaper, in your mail or pick up your **FREE** copy at Grand Union this week (while supply lasts).

It's packed with hundreds of Red Dot Specials!



Van Camp's  
**Pork & Beans**  
3 1-Lbs. Cans **89¢**

Assorted Toasted Varieties  
**Keebler Crackers**  
9-oz. Pkg. **99¢**

**Super GRAND UNION Coupon**  
Regular or Diet & No Caffeine  
**Seven-Up Soda**  
One 2-Liter Btl. **69¢**  
No Minimum Purchase Required With This Coupon.  
Good Sept. 1 Thru Sept. 7. Limit One Coupon Per Customer.

U.S.D.A. Choice - Boneless Beef  
**Top Round** For London Broil  
Also: Sirloin Tip (Round) or Shoulder  
Lb. **1.97**

Assorted Varieties  
**Lay's Potato Chips**  
7-oz. Pkg. **89¢**

**Super GRAND UNION Coupon**  
Creamy or Crunchy  
**Skippy Peanut Butter**  
One 1-Lb., 2-oz. Jar **99¢**  
No Minimum Purchase Required With This Coupon.  
Good Sept. 1 Thru Sept. 7. Limit One Coupon Per Customer.

U.S.D.A. Choice - Boneless Beef  
**Bottom Round Roast**  
Also: Shoulder Roast  
Lb. **1.67**

Firm Ripe Chiquita  
**Golden Bananas**  
3 Lbs. **99¢**

Kraft  
**Philadelphia Cream Cheese**  
8-oz. Pkg. **79¢**

### THE BUTCHER BLOCK

Freshly Ground Beef  
**Ground Round**  
Lb. **1.99**

Thorn Apple Valley  
**Fresh Boneless Ham**  
Whole or Half Lb. **1.79**

### PRODUCE

**NO SULFITES**  
on Grand Union Produce. Ever!

### GROCERIES

Sacramento Plus or  
**Tomato Juice**  
1-Qt. 14-oz. Can **69¢**

Prints  
**Coronet Paper Towels**  
115 Sheet Roll **59¢**

**Sirloin Tip Roast 1.87¢**  
U.S.D.A. Choice - Boneless Beef Round or Rump Lb.  
**Swiss Steak 1.87¢**  
U.S.D.A. Choice - Boneless Beef Lb.  
**Eye Round Steak 2.49¢**  
U.S.D.A. Choice - Boneless Beef Thick or Thin Lb.  
**Chuck Cubed 2.39¢**  
U.S.D.A. Choice - Boneless Beef Steak Lb.  
**Round for Fondue 2.49¢**  
U.S.D.A. Choice - Boneless Beef Cubes Lb.

**Turkey Breast 2.79¢**  
Louis Rich - Tenderloin Lb.  
**Turkey Drumsticks 69¢**  
Shady Brook Farms - Grade A Fresh Lb.  
**Chicken Leg Qtrs. 57¢**  
Holly Farms - Grade A - with Portion of Back Lb.  
**WHOLESALE SAVINGS**  
**Tenderloin 3.97¢**  
U.S.D.A. Choice - Boneless Beef Untrimmed 5.7 Lbs. Ctry. G. Vac. Custom cut Lb.

**Bartlett Pears 59¢**  
Fresh Northwestern Large Size Lb.  
**Apples 89¢**  
Granny Smith Imported U.S. No. 1 - 2 1/2 Min. Lb.  
**Eggplant 39¢**  
New Jersey Fresh Lb.  
**Limes 10 99¢**  
Florida - Juicy Large Size For 6-oz. Pkg.  
**Mushrooms 99¢**  
Snow White - Fresh All Natural 12-oz. Pkg.

**Planters Snacks 79¢**  
Assorted Varieties Assorted Sizes  
**Bumble Bee Tuna 69¢**  
Chunk Light - In Oil or Water 6 1/2-oz. Can  
**Realemon Lemon Juice 1.09¢**  
Reconstituted 1-Qt. Btl.  
**Wish-Bone Salad Dressing 1.19¢**  
Ass. Varieties - Exc. Blue Cheese 1-Pt. Btl.  
**Hershey's Milk Chocolate or Kit Kat, Reese's, Skor 1.59¢**  
Pkg. of 6 Bars

**Sweet Peas 2.89¢**  
Green Giant 1-Lb., 1-oz. Cans  
**Maxwell House 2.19¢**  
Coffee - Reg., Elec. Perk or ADC Ass. Sizes  
**Devil Dogs Drake's 1.99¢**  
Value Pack or Coffee Cake Jr. or Yodels 1-Lb., 7.25-oz. Can  
**Kal Kan Dog Food 63¢**  
Assorted Varieties 1-Lb., 7.25-oz. Can  
**Brillo Soap Pads 99¢**  
For Scouring Pkg. of 18

### FAMILY PACK SAVINGS

**Chicken Legs 99¢**  
Pardner - Grade A Whole w/Thighs Eo Lb.  
**Chicken Breasts 1.69¢**  
Pardner - Grade A Whole w/Thighs Eo Lb.  
**Pork for BBQ 1.59¢**  
Pork Rib End - Sliced Eo Lb.

### THE CORNER DELI

**Turkey Breast 1.99¢**  
Toll Western Governor Quality Half Lb.  
**Potato Salad 67¢**  
Wish-Bone Dressing, Mayonnaise Lb.  
**Cooked Ham 1.39¢**  
Deli Sliced - Water Added Half Lb.

### THE BIG FREEZER

**Pancakes 79¢**  
Dorothyflake - Keg or Blueberry 10-oz. Pkg.  
**Cream Pies 1.19¢**  
Mrs. Smith's - Assorted Flavors 13-oz. Pkg.  
**Flounder Dinner 1.19¢**  
Taste O Sea 9-oz. Pkg.

**Silver Star Ravioli 1.59¢**  
Pkg. of 12 Round - Cheese 13-oz. Pkg.  
**Lemonade 2.79¢**  
Sunkist - Concentrate For 6-oz. Cans  
**Mellin Apres 2.49¢**  
Assorted Flavors For 6-oz. Cans

### DATE-LINE DAIRY

**Parkay Margarine 59¢**  
Kraft - Quarters 1-Lb. Pkg.  
**Yogurt Colombo 2.100¢**  
Assorted Flavors For 8-oz. Cans  
**Blue Bonnet 1.39¢**  
Soft Spread 7-Lb. Can

### HEALTH & BEAUTY

**Ivory Shampoo 2 for 3.00¢**  
or Conditioner - Ass. Varieties 13-oz. Btl.  
**Aqua-fresh Toothpaste 1.49¢**  
with Fluoride & Brighteners 8.2-oz. Tube  
**Energizer Batteries 1.79¢**  
Eveready - C or D Cell Pkg. of 2

**GRAND UNION Coupon**  
**25¢ Off**  
With This Coupon And Purchase Of One 1-Lb., 2-oz. or 1-Lb., 12-oz. Jar - Oring. or Thick & Spicy  
**Kraft Barbecue Sauce**  
Coupon Good Sept. 1 Thru Sept. 7. Limit One Coupon Per Customer.

**GRAND UNION Coupon**  
**40¢ Off**  
With This Coupon And Purchase Of One Pkg. of 100 - Brisk Flow-Thru  
**Lipton Tea Bags**  
Coupon Good Sept. 1 Thru Sept. 7. Limit One Coupon Per Customer.

**GRAND UNION Coupon**  
**25¢ Off**  
With This Coupon And Purchase Of One 1-Lb. Pkg. - Snack Pack Plain or Peanut  
**M & M or Milky Way, Snickers or 3-Muskettiers Bars**  
Coupon Good Sept. 1 Thru Sept. 7. Limit One Coupon Per Customer.

TOLL-FREE  
STORE INFORMATION  
1-800-221-1835

# GRAND UNION

**MOST STORES ARE  
OPEN 24 HOURS**  
Check your local Grand Union for store hours.

Prices effective Sunday, Sept. 1 thru Saturday, Sept. 7 at all Grand Union stores in New Jersey, Rockland and Orange Counties. In order to assure a sufficient quantity of sales items for all our customers, we reserve the right to limit sales to 3 packages of any item unless otherwise noted. Not responsible for typographical errors. For store information call toll free, 1-800-221-1835.



**FIVE STAR SERVICE EXCELLENCE AWARD WINNER**



## Service News

Navy Seaman Michael T. Murphy, son of Thomas and Rose Murphy of Belleville, has completed recruit training at Recruit Training Command, San Diego, Calif.

During Murphy's eight-week training cycle, he studied general military subjects designed to prepare him for further academic and on-the-job training in one of the Navy's 85 basic fields.

Murphy's studies included seamanship, close order drill, naval history and first aid. Personnel who complete this course of instruction are eligible for three hours of college credit in physical education and hygiene.

Murphy, a 1984 graduate of Belleville High School, joined the Navy in November 1984.



Michael T. Murphy

Airman Kathleen M. Kelleher, daughter of Mortimer and Sally Kelleher of Belleville, was recently graduated from the U.S. Air Force Inventory management course at Lowry Air Force Base, Colo.

During the course, students were taught property accounting, customer support, stock control and equipment management for a base supply

system. They also were taught to inventory supplies using electronic data processing machines.

Through the course, Kelleher earned college credits toward an associate degree through the Community College of the Air Force.

Kelleher, a 1984 graduate of Belleville High School, is scheduled to serve in West Germany.

Cadet Timothy W. May, son of Mr. and Mrs. Robert J. May Jr. of Belleville, has been promoted to the rank of Cadet Second Lieutenant in the Marion Military Institute Corps of Cadets.

May, a sophomore, is serving as operations officers in Brigade Headquarters for the 1985-86 school year.

During the summer, Cadet May successfully completed the third ROTC Region Advanced Camp at Ft. Riley, Kan. This training is a major part of the Army's two-year ROTC commissioning program, a unique factor of military junior colleges such as MMI.

Marion Military Institute is an independent, non-profit institution consisting of a coeducational high school and two-year college. More than 190 generals and admirals began their military training at MMI, which has been designated by the Department of the Army as Honor Military School with Distinction.

Marine Pfc. Charles A. Janusz, son of Charles F. and Patricia A. Janusz of Belleville, recently reported for duty with the 2nd Marine Aircraft Wing, Marine Corps Helicopter Air Station New River, Jacksonville, N.C.

Janusz, a 1984 graduate of Belleville High School, joined the Marine Corps in August 1984. He is married to the former Lisa Balsamo, also of Belleville.

## St. Mary's opens sports program

St. Mary's School has announced the opening of this year's sports program. The program begins with soccer in the autumn. Soccer will be followed by volleyball, basketball and baseball.

Games will be played in

Msgr. Owens Field. The program will be open to St. Mary's students and children attending CCD classes at St. Mary's.

For information phone Bob Travers between 7 and 9 p.m., 759-6781.

## Young squad works hard during practices

(Continued from page 13)

consistent. Most of the athletes finished from the 700-900 range.

In Senesky's decathlon, 1,000 over more points is considered outstanding. An athlete with 700-900 points is considered to be in excellent condition.

The top scorer this year was Dave Silletti, a senior, who finished at 978. Last season, Apicella and Steve Kimble posted scores of 1,000 to lead the way.

Other players in the 900 range were Dennis Ives (sr.), juniors Jamie Galito and Gerard Corbo, sophomore Craig Jakowski and seniors Steve Linfanti and Rick Albanese.

The 800 point scorers were senior Robert Ferrucci juniors Al Best, John View, Pete Hywell and Dan Senesky. The sophomores, and there were a number of them who were impressive, were Jeff Spillsbury, Dawson Bloom, Frank Pacheco, Donald Tuosto and J.P. Grande.

A number of athletes posted scores in the 700 range, thus giving the team an excellent median score of 650, a fine overall performance.

In the power index ratio, three players finished with scores of 6.0 or better. A score of 6.0 is considered outstanding and there juniors, Gerard Corbo (6.31), Joe Dominick (6.42) and

Dan Harrington (6.0), achieved that mark.

A power index of 5.0 is considered excellent and that was attained by six juniors, five sophomores and eight seniors.

"We were pretty pleased with the overall results," Senesky said. "We lost a number of players from last years team, but this years squad is really optimistic. As far as the scores are concerned, the kids are right where they should be for this time of year. We did the testing in three days this year, instead of the usual four, but it didn't seem to affect the players."

The Bucs first scrimmage is scheduled for Saturday, a tri

scrimmage with West Essex and Madison Borough, at West Essex. The scrimmage will start at 10 a.m. On September 14, the Bucs will host Bayley Ellard at 10 a.m. from Municipal Stadium.

The opening game is on September 28, a night game with Don Bosco Prep. at Municipal Stadium.

Next Sunday will be the second annual picture day at Belleville High School. It will give the parents and fans a chance to photograph their favorite athletes in the six fall sports. The picture day festivities commence at 1 p.m. from Municipal Stadium.

The early signs are positive, albeit cautiously, for the 1985 Belleville football team. A lot more will be known by next week, but the tempo is upbeat as another school year begins.



Ready, Get Set, Go! - Members of the Belleville Junior Bucs javayee squad practice their moves on the line during a workout session this past Saturday. The team, which consists of approximately 60 players, is coached by Earl Wake, head coach, and Frank Stanco and Vin DeVeneziano, assistant coaches.

## Giants fight for playoff

(Continued from page 13)

New England appears the only legitimate threat of catching Miami, while the Jets, Indianapolis and Buffalo should "battle" for third.

Prediction: Miami, 10-6, New England, 10-6, Jets, 6-10, Indianapolis, 4-12, Buffalo, 4-12.

The AFC central saw the return of power to Pittsburgh last season. The Steelers were back in the AFC title game for the first time since 1979. Although they lost, they have a good young team and should take the AFC central for the third straight year. Cincinnati should be a good team while Houston and Cleveland look to rebuild with youth. Both the Oilers and Browns will probably start slow, but watch out in the later stages of the season.

Prediction: Pittsburgh, 9-7, Cincinnati, 8-8, Houston, 8-8, Cleveland, 7-9.

Finally, the AFC west should be led by the L.A. Raiders and the ageless wonder, Jim Plunkett. The Raiders have a solid club and look to come back after an 11-5 record and second wild card spot last year. It won't be easy, though, with Denver, Seattle and Kansas City in the thick of things. San Diego could also contend if everyone stays healthy.

Prediction: L.A. Raiders, 10-6, Seattle, 9-7, Denver, 9-7, Kansas City, 8-8, San Diego, 7-9.

In the playoffs, St. Louis, Chicago and San Fran as divisional champs in the NFC, with Dallas and Washington as wild card entries. In the AFC, Miami, Pittsburgh and L.A. as divisional champs, Seattle and New England as wild card. When the Super Bowl comes in January, look for an all western championship, with the Raiders and Niners.

This Weeks Poor Athlete

For this week, take pity on Anthony Dickerson of the Rams, who will probably hold out for the entire season because he wants to renegotiate his contract. The poor guy doesn't think it's right to honor his contract because he is being paid below minimum wage to run with the football. He's also pretty smart because he has an ex-boxer, Ken Norton, as his agent.

## Softball game set for Sept. 15

For Pete's Sake of Belleville will sponsor its first Gays and Dolls Softball Game and Picnic, Sunday, Sept. 15, at noon at Turtle Back Rock Park in South Mountain Reservation, West Orange.

A \$10 donation, which includes a t-shirt, will be given to the Special Olympics fund.

Food and beverage will be provided compliments of Pete Vaccarelli, owner of For Pete's Sake.

### Trivia Fans

I BET YOU DIDN'T KNOW

Brought to you By Bigelow Motors Chrysler Plymouth

- Questions:
1. What city has the world's longest subway system?
  2. What could Roman Catholics do in good conscience for the first time on Dec. 5, 1967?
  3. How many sticks are used in jackstraws, or pick-up sticks?
  4. How many bonus points does a wild-card canada score?
  5. What presidential administration challenged Americans to explore The New Frontier?
  6. What part of the body does lacrimal fluid lubricate?
  7. Who played homosexual lovers in "Staircase"?
  8. What nursery rhyme character was arachnophobic?
  9. What's the second jewel in horse racing's Triple Crown?
  10. Who was the prosecuting attorney in the Scopes monkey trial?
  11. The Breakers-Skales
  12. Little Miss Muffet
  13. Harrison
  14. Richard Burton and Rex
  15. John F. Kennedy's
  16. 4,000
  17. 3,000
  18. 2,000
  19. 1,000
  20. 500

Answers:

1. London
2. Eat meat on Friday
3. 21
4. 3
5. 100
6. 100
7. 100
8. 100
9. 100
10. 100
11. 100
12. 100
13. 100
14. 100
15. 100
16. 100
17. 100
18. 100
19. 100
20. 100

Bigelow Motors Chrysler Plymouth 50 Washington Ave. Belleville 759-4220

## JazzTwirl

A combined program of baton twirling and jazz dance classes

DIRECTOR/CHOREOGRAPHER — Gail Bello

Graduate-Dance Educators of America Training School Certified Teacher and Judge — New Jersey Twirling Association

Classes begin Saturday, September 7 and will be held at the

Nutley Italian American Civic Association 642 Franklin Avenue, Nutley

For registration and information call: 235-1330 Private lessons are also available.

## Total Eclipse

Tanning Salon

312 Washington Avenue, Belleville (across from Muscara Music)

Call Our Tanning Specialist Janice Huber for information: 450-0336

THE END OF SUMMER DOESN'T MEAN THE END OF YOUR SUMMER TAN!

COUPON  
END OF SUMMER  
SPECIAL  
6 SESSIONS \$25  
FOR ONLY SAVE \$10.00  
OFFER VALID WITH COUPON  
EXPIRES 11/30/85  
COUPON

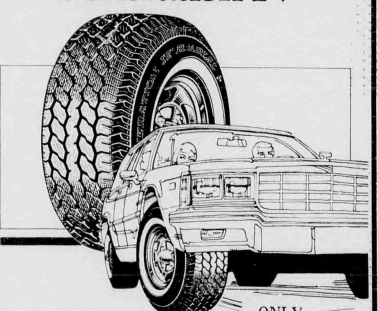
Bring a Friend to Join You Will Receive 1 EXTRA FREE SESSION!



OPEN 7 DAYS. KEEP A LITTLE SUNSHINE IN YOUR LIFE

All-Seasons, Long Mileage Radial

## Dunlop Generation IV+



ONLY \$49.00 P155/80R13

- 40,000 mile limited mileage warranty.
- Perfect for front and rear wheel-drive vehicles.
- All-season performance - M/S designation (mud and snow).
- Advanced tread compound and tie bar construction for added tread life.
- Two steel belts for a road-hugging ride.
- Continuous center rib and wraparound shoulder tread design for steering precision and cornering control.
- Ask Dealer for Details

DUNLOP The World's Tire

## BRADLEY TIRE SERVICE

NEW & USED TIRES

Alignment, Balancing & Vulcanizing Service

For Complete Radial Tire Service

Call 759-4469

523 Washington Ave., Belleville, N.J.





Doreen Wong, daughter of Mrs. Heidi Wong of Belleville, participated in Hiram College's Extra Murals Program to Ireland, Aug. 10-24.

The two-week trip included visits to Galway, Sligo, Connemara and Dublin.

Bogumila Wojtunik, R.N., B.S.N., of Belleville was recently awarded a scholarship to further her education.

Wojtunik, a pediatric nurse at Overlook Hospital in Summit, is studying for her master of arts degree at New York University.

The scholarships are funded through the contributions of the

Overlook Hospital Auxiliary, the Adele M. Lynch Allied Health and Nursing Scholarships and the Auxiliary's Summit Trip 34.

William R. Hamilton, son of Mr. and Mrs. Edward Hamilton of Belleville, was graduated magna cum laude from North Carolina Central University School of Law in May and passed his bar exam in July.

Hamilton, a 1972 graduate of Belleville High School, received his Bachelor of Science degree in 1976 from Duke University. He then was employed as a research technician at Duke

University before attending North Carolina Central University.

Hamilton, who lives in Cedar Grove, N.C., with his wife, Susan, is employed by a law firm in Chapel Hill, N.C.



1985 Pontiac Trans-Am

Advertisement

## Experience the thrill: test drive a Trans Am

By Celeste Federico  
Ever wonder what it's like sitting behind the wheel of an Indy 500 race car?

Well, recently I had the chance to test drive a 1985 Pontiac Trans-Am from Lou Demassio of Louis Pontiac on Park Avenue in Lyndhurst.

The car, which has a selling price starting at \$11,500, was bright red with dove gray interior and five on the floor.

The car I drove was equipped with a Delco 2000 sound system, including AM-FM stereo (seek and scan), auto reverse cassette and a clock, air conditioning, tilt wheel, cruise control and power windows, brakes, door locks and seats.

Driving that car made me feel like Magnum P.I. in his red Ferrari. The gentle ride and thrust from fourth to fifth gear was like taking off in a 747 jet.

The car, which could travel up to a speed of 110, hugged the most hazardous curves.

Friends were awed by the

Dawn Price, a graduate of Belleville High School, will begin her studies this fall at The Berkeley School of Garret Mountain.

Miss Price, daughter of Mrs. Robert Price, will be enrolled in



Dawn Price

Berkeley's 18-month professional secretarial program, which provides training for the most advanced secretarial positions, lays the foundation for attainment of the Certified Professional Secretary designation and leads to an Associate in Applied Science Degree.

She will begin her studies Sept. 30.

### DENTALLY SPEAKING

By Drs. James D. Muglia and Paul N. De Malo

Mr. J. of Belleville writes: "Once a tooth is crowned can it still get decayed?"

As you know Mr. J. a crown covers 360 degrees of a tooth and often goes under the gums. In those cases if your dental hygiene is good and you keep your gums healthy the possibility of decay under your crown is very small.

If your crown ends above your gums again your tooth will not be decayed if your hygiene and diet is good.

So Mr. J. once a tooth is crowned it's very well protected but if that tooth is neglected it can become subject to the same problem as an uncrowned tooth. Keep up good daily hygiene and you'll be fine. Thank you.

Address all inquiries to:

Send Inquires To:  
Dentally Speaking  
671 Franklin Avenue  
Nutley, N.J. 07110  
667-4421

## NURSE RN F/T POSITION

MUST BE BELLEVILLE RESIDENT  
NURSING SERVICE  
BELLEVILLE HEALTH DEPARTMENT  
EXCELLENT SALARY AND BENEFITS  
SEND RESUME AND AVAILABILITY TO:

PUBLIC AFFAIRS DEPT.  
383 WASHINGTON AVENUE  
BELLEVILLE, NEW JERSEY 07109

ATTN: M. PIZZI, DIRECTOR

**FELICE**  
Extends His Services  
With  
Hair Styling By Professionals  
Featuring:  
• Expert Cutting • Perms  
• Complete Styling • Hair Coloring  
Call 661-2455 Today!  
**FELICE HAIR STUDIO**  
512 Franklin Ave., Nutley  
Open Daily 9-6, Saturday 8-4, Closed Mondays

**ARLINGTON JEWELERS**  
Presents Its  
**DIAMOND & GOLD SUMMER EXTRAVAGANZA!**  
BUY NOW For Anniversary, Commemorations, Christmas, Weddings, Graduations and all gift giving occasions  
**SAVE UP TO 50% ON OUR 14K GOLD & DIAMOND**

ALL ITEMS ARE 14K GOLD — QUANTITIES LIMITED. PRICES SUBJECT TO CHANGE DUE TO FLUCTUATING GOLD MARKET. NOT RESPONSIBLE FOR TYPOGRAPHICAL ERRORS.

SPECIAL SALE ITEMS	REG.	NOW
7 S Chain Bracelet	16.00	7.99
16 S Chain Necklace	34.00	16.99
18 S Chain Necklace	38.00	18.99
24 S Chain Necklace	48.00	23.99
16 Special Pendant Chain	34.00	18.99
18 Special Pendant Chain	38.00	18.99
7 Rope Bracelet	52.00	30.00
16 Rope Necklace	120.00	72.00
18 Rope Necklace	140.00	90.00
20 Rope Necklace	150.00	79.00
24 Rope Necklace	180.00	109.00
Diamond Heart Initial Pendant	65.00	40.00
Ladies Diamond Initial Bracelet	120.00	60.00
Ladies Diamond Initial Rings		
(5 styles from sm. to jumbo)	100-420	50-225
Diamond Stud Earrings 1/2 ct 1 W	325.00	200.00
Diamond Stud Earrings 1/2 ct 1 W	430.00	275.00
Diamond Stud Earrings 1/2 ct 1 W	700.00	430.00
Custom Made Name Necklace (chain inc.)	150.00	80.00
Mothers Ring	150.00	99.00
Mini Crucifix Ring	43.00	25.00
Ladies Crucifix Ring	65.00	42.00
Gents Crucifix Ring	80.00	52.00
Small Diamond Cut Initial Ring	38.00	25.00
Frigfree Initial Ring	55.00	35.00
Large Ladies Initial Ring	126.00	75.00
Diamond Name Necklace with chain (handmade)	825.00	475.00
Diamond Name Bracelet with double Solid Rope Chains	925.00	550.00
Class of 85 Charm	33.00	23.00
Graduation Cap & 85 Charm	14.00	8.00
First Communion Charm	28.00	19.00
Holy Communion Charm	28.00	26.00

**FREE GOLD** Get A FREE 14K Gold Jewelry Gift  
With Any \$100 Purchase  
ARLINGTON JEWELERS  
38 RIDGE RD. NO. ARLINGTON  
261 FRANKLIN AVE. NUTLEY  
WITH THIS COUPON  
Expires 9/12/85

Main Store: 36 RIDGE ROAD, NO. ARLINGTON • 998-5036  
Branch Store: 261 FRANKLIN AVE. NUTLEY • 661-1558  
Summer Hours: Closed Mon. & Tues. Hours: Wed., Sat 10-6; Thurs., Fri 10-8

**Lawn Gone?**

Time to call Lawn King

All lawns need an annual program of lawn care and every program must contain both granular and spray. Some chemicals work better when applied in a granular form, and others, like weed controls and post emergent crab grass controls, work better in a liquid form. All lawns also require periodic aeration and seed, but only Lawn King gives all these via LAWN COMBINE & SPRAY — THE BETTER WAY! WE KNOW IT'S THE ONLY WAY!!

LAWN KING ANNUAL PROGRAM				
1. Balanced Fertilization Broadleaf Weed Control Pre-emergent Crab Grass Control	2. Balanced Fertilization Broadleaf Weed Control Chinch Bug Control Sod Webworm Crab Control	3. Balanced Fertilization Broadleaf Weed Control Micro-Nutrients Chinch Bug Control Sod Webworm Control	4. Power Aeration Power Rolling Balanced Weed Control Broadleaf Post-Emergent Crab Grass Control Seed (1 lb./1000)	5. Fertilization Control Lime

We are chemical applicators, not miracle workers. We know what your lawn needs and when it needs it. What you see in the program is what you get. Top quality chemicals and seed — only the best — that all we use. There's no such thing as a specially formulated for aeration, seed and lime are part of our program. Fungus controls and grub controls have always been part of our program, not optional extra cost when you need them. By the time you know you need them it's too late (anyway).

**OPTIONAL PREPARATORY SERVICE**  
Double Power Aeration Double Power Rolling Double Seed Control Double Weed Control  
Balanced Fertilization Fungus Control Grub Control  
1" PER SQUARE FOOT (min. 3,000 sq. ft.)

Someone will call to discuss the lawn with you. There's a one time charge if you need any extra like preparatory service, extra seed or additional time. We'll tell you what you need. We may not be the cheapest lawn service around but we are the only ones who give you your lawn everything it needs at a price you can afford to pay. You can figure your costs from the chart below. No contracts to sign, no guarantees, no promises, and no nonsense. Pay from service to service or prepay for the year and we'll give you a 5% discount too!

If you compare our program and prices with any other company, you'll find that either they are charging too much, or we are not charging enough! Look at it real close and you may even arrive at the conclusion that not only is it better to do business with us — it's cheaper too!

SQUARE FOOTAGE	QUARTERLY INSTALLMENT	TOTAL ANNUAL COST
3000	42.24	168.96
4000	56.32	225.28
5000	70.40	281.60
7000	97.76	391.04

LARGER LAWNS PRICED PROPORTIONATELY. ALL PRICES PLUS SALES TAX.

**LAWN GONE?** Time to Call... Free Estimates

All lawns need an annual program of lawn care and every program must contain both granular and spray. Some chemicals work better when applied in a granular form, and others, like weed controls and post emergent crab grass controls, work better in a liquid form. All lawns also require periodic aeration and seed, but only Lawn King gives all these via Lawn Combine and spray, and still at less than 1¢ per square foot per visit!

**Lawn King** with this coupon  
**\$10.00 OFF or 5%** (Whichever is greater)  
On Your First Year's Service (Minimum 3,000 sq. ft.)  
Limit one coupon per customer. Coupon valid with new customers only.

Nutley, Belleville, Bloomfield  
994-2255/743-1025



Warning: The Surgeon General Has Determined  
That Cigarette Smoking Is Dangerous to Your Health.

.12 mg "tar," 0.8 mg nicotine av. per cigarette, FTC Report Feb '85.

© Philip Morris Inc. 1985



# THE PERFECT RECESS

Re·cess (Webster): A break from activity for rest or relaxation.

Re·cess (Parliament): A unique filter for extra smooth taste and low tar enjoyment.



# John Kelly asks Adubato to defend Shapiro's claims

(Continued from page one)

which includes the seven towns of Belleville, Bloomfield, Cedar Grove, Glen Ridge, Montclair, Nutley and Verona, if they've been paying less taxes during Shapiro's two terms in office, Kelly said.

Kelly, who said he doesn't intend to mince any words during the current campaign for the state legislature, said he intends to tell the people the truth about the issues and that it is his intention to make property tax relief a major focus of attention when elected to the State Assembly.

Kelly cited statistics proving the falsity of Shapiro's claim of tax reduction:

	1978	1985	Increase
Belleville	\$5,903,687.57	\$7,480,000.00	26.70
Bloomfield	\$9,009,521.21	\$11,197,025.07	24.27
Cedar Grove	\$1,536,805.58	\$4,075,503.00	165.19
Glen Ridge	\$1,631,366.75	\$2,708,882.25	66.04
Montclair	\$7,431,662.51	\$12,700,000.00	70.89
Nutley	\$6,595,601.20	\$9,588,147.11	45.37
Verona	\$3,257,183.05	\$5,638,068.50	73.09

"These are the facts," said Kelly. "And Adubato knows them very well. The problem with Adubato is that he's too busy running around looking for ways to spend the taxpayers' money that he doesn't stop and realize that the taxpayers are sick and tired of overtaxation and excessive spending."

Kelly further pointed out that Shapiro's proposal is reminiscent of Walter Mondale's supposed intellectual honesty about taxes in the last presidential election.

"Both Shapiro and Adubato, who both supported Walter Mondale, are asking the people of this area to accept this 'big lie'."

Kelly said, adding, "Mondale asked the American people for permission to raise their taxes and he was soundly repudiated."

"Now the Shapiro-Adubato slate is asking the people to believe the taxes in our area have been lowered when the op-

posite is true," he said.

Kelly cited three specific examples of tax increases in the towns of Belleville, Bloomfield and Cedar Grove.

For a home with an assessment of \$62,000 in Belleville, in 1978, the property tax going just to the county (excluding local and school taxes) was \$835. In 1985, the county taxes are \$1,053. For a home with an assessment of \$56,000 in Bloomfield, in 1978, the property tax going just to the county (excluding local and school taxes) was \$1,137. In

1985, the county taxes are \$1,516.

For a home with an assessment of \$56,000 in Cedar Grove, in 1978, the property tax going to the county (excluding local and school taxes) was \$377. In 1985, the county taxes are \$922.

"These figures do not in any way shape or form indicate a reduction in property taxes," said Kelly, "and I'm asking Mr. Adubato to repudiate his running mate's platform or else lay claim to being part of the deception," Kelly said.

## Ordinance increases 3 employees' salaries

In Kearny, which has a population of 35,735, the construction code official receives a salary of \$38,016, whereas the superintendent of recreation receives \$28,600.

If the salary ordinance is approved, the Belleville construction code official would be one of

the highest paid employees, along with the police chief, fire chief, treasurer and township attorney.

Approval for the ordinance will be voted on at the board of commissioners' meeting, Tuesday, Sept. 10, 8 p.m. at town hall. Caucus session is at 7 p.m.

By Michelle Jeannotte

## WANTED

### Food and Novelty Vendors

"Festa Colombo"

October 18th, 19th, & 20th, 1985  
Belleville Municipal Stadium

Vendors of Italian Specialty foods and novelty items for three day feast.

October 18, 1985 (7 pm to 12)  
October 19, 1985 (11 am to 11 pm)  
October 20, 1985 (4 pm to 9 pm)

There will be rides, games and music on this Columbus Day Parade weekend sponsored by the Belleville-Nutley Columbus Day Parade Committee.

For further details call:  
759-4848 or 759-7131 or 997-2121

# \$10<sup>00</sup>

Above Dealer Cost

## TOP THIS IF YOU CAN!

### Friday & Saturday Only

Any Size Carrier® Air Conditioner  
(Warranty starts June 1986)

"WE SERVICE WHAT WE SELL"

## BECK'S Radio & Appliances

196 Franklin Ave., Nutley  
667-4225



**NEW SEATS NEW SEATS**

**Franklin 3 Nutley**

AMPLE LIGHTED PARKING

European Vacation - PG 13

Gremlins - PG

Godzilla '85 - PG Sat & Sun. Matinee

Follow That Bird - G

510 Franklin Ave. Nutley 667-1777

**NEW SEATS NEW SEATS**

**The Choice of the People**

7 Days  
24 Hours  
Delicious  
Salad Bar!  
Italian  
Specialties!  
Steaks & Chops

All baking done on premises • Homemade pastries  
Children's Menu Available  
Special Breakfast Menu: 6-11 a.m.  
Daily Businessman's Lunch: 11 a.m.-3 p.m. Salad Bar Open 11 a.m.-10 p.m.  
A LA CARTE and COMPLETE DINNER MENU

**We're Always Open**  
**WILLIE'S**  
DINER-RESTAURANT

9 State St., Bloomfield Call 748-7414

# Where To Dine

**GREEN APPLE**  
Cafe  
Food & Drink  
720 Washington Avenue Belleville, N.J. Open 7 Days  
759-1516 153 Belleville Ave. Belleville  
Open 7 Days  
**FOR PETE'S SAKE**  
Master Chef "Chic" is here!  
(formerly at Old Canal Inn)  
Kitchen open till midnight  
Open 7 Days 11 am-2am  
**FOUR STAR**

**Armando Di Villa**  
RISTORANTE  
HOSTED BY ONOFRIO  
**EXQUISITE ITALIAN CUISINE**  
Come and dine in our new exquisite beautifully remodeled surroundings.  
We'll cater to any size party. Call for your special occasion - wedding, bar mitzvah, birthdays or anniversary.  
R.S.V.P. Required 667-8899  
800 Bloomfield Ave. Nutley, N.J.

**LEE'S** Hawaiian Islander  
Mon., Tues., Wed. 5-10 p.m.  
Smorgas - Luau  
All you can eat **\$9.25**  
788 Stuyvesant Ave. Lyndhurst 939-3777  
635 Lexington Ave. Clifton 478-1977

**GREEN APPLE**  
Cafe  
By Lisa Grimaldi

A new restaurant has opened in the area, which has perfect blend of atmosphere, food, drink and quality service. The Green Apple, located in the Pathmark Center on the Nutley/Belleville border, is, in one word, a delight.

The interior has been completely transformed from the previous restaurant's (The Ground Round) decor. Now, it is fresh, airy and spacious. The prevalent color is, obviously, green, but my favorite aspect of the restaurant is a model train that runs on track around the restaurant, high up on the wall.

The waiters and hostesses are all attractive, friendly, young people (mainly college students) who wear a uniform of green polo shirts and khaki slacks. Our waiter was a very personable student from the University of Delaware, working here for the summer. He had a thorough knowledge of all menu items, had many suggestions, and he graciously fulfilled all our requests.

The menu of The Green Apple is small, but everything on it is made to order, and there is enough variety for many appetites. The potpourri from the appetizer list was a delicious, generous platter of delicately deep-fried mushrooms, zucchini, potato skins, and my favorite, an onion ring loaf which was made of fresh red onions. Chris, one of the capable managers of the restaurant, had us sample something from each section of the menu. He cooked the Crabmeat stuffed Sole to "a succulent perfection." The portion was generous and was served over an intriguing rice. The Stuffed Chicken Breast was also delicious, and both entrees were served with either a baked potato or freshly cut french fries.

There are many salads to choose from, with some interesting variations to the usual iceberg and chef salads. The spinach salad was fresh and delicious, and was served with a great hot bacon dressing.

The Burgers here are incredible! They are made of a one-half pound fresh ground beef, and they are huge. There are many types of the Pub Burgers on the menu. The menu also features Croissant Sandwiches. The Turkey, Bacon, and Swiss Sandwich was fantastic, the croissant was overstuffed, and was served with a slice of sweet watermelon, and chips.

A special of the day was the Three Cheese Quiche. I am not usually a fan of the dish, but this quiche was extraordinary. It was light, fluffy, and tasty, and was served with a big slice of home-made cornbread. There is also a special Mexican section on the menu, which has some interesting dishes.

For dessert, there are several home-made confections which are out of this world. The Chocolate Chocolate... Cake, was so rich and delicious, that it must be shared with someone. In fact, each generous slice is served with two forks! There is also a sinfully delicious Chocolate Chocolate Chip Ice Cream, which was the ultimate indulgence to end the meal with.

The menu is the same for both dinner and lunch, although there are daily specials. The restaurant is open from 11 AM until 2 AM daily, except on Sunday, when it closes at midnight.

The Green Apple is located at 720 Washington Avenue in Belleville, right on the Nutley border, an ideal spot for lunches, after work drinks and appetizers, dinner, and late night snacks, with a full bar list also. I highly recommend it.

**The FEEDBAG**  
FAMILY SALOON  
A feedbag is a pizza dough baked around fresh tomato sauce, cheese, onions, peppers, and your choice of over 20 of your favorite meat and fresh vegetable fillings.  
OPEN MON THRU SAT FOR LUNCH AND DINNER AND LATE NIGHT SNACKS  
Cocktail Lounge  
Smorgasbord Mon.-Wed. \$10.95 per person  
Luncheon Mon.-Wed. \$7.50  
Dinner Mon.-Wed. \$10.95  
**CHINA GARDEN**  
306 Main Avenue  
Clifton, N.J. 723-3633  
Take Out Orders Call 773-7633

**PROUD MARY'S**  
Restaurant - Lounge  
**PROUD MARY'S**  
409 Franklin St.  
Bloomfield 429-9246

**WILLIE'S**  
Diner - Restaurant  
9 State St., Bloomfield 748-7414  
Open 7 Days 24 Hours  
Italian Specialties!  
Delicious Salad Bar - Homemade Pastries

**Yesterdays**  
An eating & drinking place  
235-1766  
70 Main Ave. Clifton, N.J.

## SHERIFF'S SALE

SUPERIOR (CHAND) D-247  
SUPERIOR COURT OF NEW JERSEY,  
CHANCERY DIVISION, ESSEX COUNTY,  
DOCKET NO. F-2442-85 NEW JERSEY HOUS-  
ING AND MORTGAGE FINANCE AGENCY, a  
corp. PLAINTIFF vs. HENRY RUDOLPH, et al.  
DEFENDANTS. Execution For Sale of  
Mortgaged Premises.

By virtue of the above stated writ of Execution, to me directed, I shall expose to sale by Public Auction, in SHERIFF'S OFFICE, Essex County Courts Building in Newark, on Tuesday, the 1st day of October next, at one-thirty P.M. (Prevailing Time).

The property to be sold is located in the City of Newark in the County of Essex, and State of New Jersey.

Commonly known as: 77 Richelieu Place, Newark, New Jersey.

Tax Lot No. 91 in Block No. 4125  
Dimensions of Lot: (Approximately) 50 feet wide by 90 feet long.

Nearest Cross Street: Situate on the West side of Richelieu Place 910.80 feet from the South side of Cameron Road.

A complete description can be found in the Essex County Register's Office.

The approximate amount of the Judgement to be satisfied by said sale is the sum of FORTY FOUR THOUSAND SEVEN HUNDRED SEVENTY DOLLARS AND THIRTY FOUR CENTS, (\$44,770.34), together with the costs of this sale.

The Sheriff reserves the right to adjourn the sale from time to time as provided by Law.

Newark, N.J. August 26, 1985  
THOMAS J. D'ALESSIO, Sheriff

Zucker, Goldberg, Becker & Ackerman, Attys.  
The Belleville Times  
Sept. 5, 12, 19, 26, 1985  
Fee: \$62.72

No. B85-349

## SHERIFF'S SALE

SUPERIOR (CHAND) D-251  
SUPERIOR COURT OF NEW JERSEY,  
CHANCERY DIVISION, ESSEX COUNTY,  
DOCKET NO. F-1387-85 THE HOWARD SAV-  
INGS BANK, a New Jersey corporation,  
PLAINTIFF vs. JOYCE S. STONE, et al.  
DEFENDANTS. Execution For Sale of  
Mortgaged Premises.

By virtue of the above stated writ of Execution, to me directed, I shall expose for sale by Public Auction, in SHERIFF'S OFFICE, Essex County Courts Building in Newark, on Tuesday, the 1st day of October next, at one-thirty P.M. (Prevailing Time).

The property to be sold is located in the City of Newark in the County of Essex, and State of New Jersey.

Commonly known as: 259 Clinton Place, Newark, New Jersey.

Tax Lot No. 8 in Block No. 3048  
Dimensions of Lot: (Approximately) 34 feet wide by 100 feet long.

Nearest Cross Street: Situate on the northwesterly side of Clinton Place, 100 feet from the southwesterly side of Bragow Avenue.

A complete description can be found in the Essex County Register's Office.

The approximate amount of the Judgement to be satisfied by said sale is the sum of FIF-

TEEN THOUSAND FOUR HUNDRED FOUR DOLLARS AND THIRTY CENTS, (\$15,404.30), together with the costs of this sale.

The Sheriff reserves the right to adjourn the sale from time to time as provided by Law.

Newark, N.J. August 26, 1985  
THOMAS J. D'ALESSIO, Sheriff

Zucker, Goldberg, Becker & Ackerman, Attys.  
The Belleville Times  
Sept. 5, 12, 19, 26, 1985  
Fee: \$62.72

No. B85-350

## SHERIFF'S SALE

SUPERIOR (CHAND) D-234  
SUPERIOR COURT OF NEW JERSEY,  
CHANCERY DIVISION, ESSEX COUNTY,  
DOCKET NO. F-1159-85 FIRST FAMILY  
MORTGAGE CORPORATION OF FLORIDA,  
PLAINTIFF vs. FREDERICK R. HARRISON, et al.,  
DEFENDANTS. Execution For Sale of  
Mortgaged Premises.

By virtue of the above stated writ of Execution, to me directed, I shall expose for sale by Public Auction, in SHERIFF'S OFFICE, Essex County Courts Building in Newark, on Tuesday, the 24th day of September next, at one-thirty P.M. (Prevailing Time).

The property to be sold is located in the City of Newark in the County of Essex, and State of New Jersey.

MUNICIPALITY: City of Newark  
COUNTY AND STATE: COUNTY OF ESSEX, STATE OF N.J.

TAX BLOCK & LOT: BLOCK 4199, LOT 84  
DIMENSIONS OF LOT: 100' x 25'

NEAREST CROSS STREET: 183.75 FEET from the corner of Palm Street and Sanford

## Avenue

A Complete description can be found in the Essex County Register's Office.

The approximate amount of the Judgment to be satisfied by said sale is the sum of THIRTY THOUSAND EIGHT HUNDRED FIFTY FIVE DOLLARS AND TEN CENTS, (\$30,855.10), together with the costs of the sale.

The Sheriff reserves the right to adjourn the sale from time to time as provided by Law.

Newark, N.J. August 19, 1985  
THOMAS D'ALESSIO, SHERIFF

William M.E. Powers, Jr., Attorney  
The Belleville Times  
Aug. 29, Sept. 5, 12, 19, 1985  
Fee: \$75.20

No. B85-339

## NOTICE OF FILING OF AN APPLICATION TO MERGE OR CONSOLIDATE

Notice is hereby given that application has been made to the Comptroller of the Currency, 1211 Avenue of the Americas, New York, New York 10036, for approval of a merger of Carteret Bank & Trust Company, Carteret, New Jersey under the charter of Peoples Bank, N.A. and with the title Peoples Bank, N.A. The application was filed August 29, 1985.

This notice is published pursuant to section 1828(c) of the Federal Deposit Insurance Act and Part 5 of the Regulations of the Comptroller of the Currency (12CFR 5). This notice will appear three times at approximately two week intervals beginning August 29, 1985. Any person desiring to comment on the merger

application may do so by submitting written comments to: Office of the Comptroller of the Currency, 1211 Avenue of the Americas, New York, New York 10036 within 30 days of the date of the first publication of this notice. The public file is available for inspection in the District Office during regular business hours.

August 29, 1985  
Carteret Bank & Trust Company  
Carteret, New Jersey  
Peoples Bank, N.A.  
Belleville, New Jersey

The Belleville Times  
Aug. 29,  
Sept. 12, Sept. 26, 1985  
Fee: \$16.92

B85-346

## We're Celebrating Our 4th Anniversary



You're invited by your hosts:

John, Nick, Mike & Alex

Come Celebrate With FREE Gifts:

*In Appreciation For Your Patronage*

**FREE SOUP and CHEESECAKE**

WITH ALL DINNERS FROM 5 - 9 P.M. DAILY  
BETWEEN AUGUST 28 to SEPTEMBER 8, 1985

EVERY MONDAY IS . . .

**STEAK NIGHT . . . \$6<sup>95</sup>**

Includes Soup, Potatoes, Vegetable, Delicious Nevada Dinner Salad

All Baking Done On Premises

Open 24 Hours — Plenty of Free Parking

Special Breakfast Menu — Monday to Saturday

**NEVADA DINER RESTAURANT**

293 Broad Street, Bloomfield — 743-9393

Affiliated Only with State Line Diner, Rt. 17, Mahwah, N.J., and Nevada Diner Bloomfield

Big Band  
Rock  
New Wave  
Disco  
Oldies

**JAM MUSIC**  
Entertainment

D.J.'s  
For all  
Occasions

- Holiday Parties
- Corporate Parties
- Bar/Bat Mitzvahs
- Weddings
- Anniversaries
- Theme Parties

CALL 751-1130  
OR 667-8547

**Diamond Express**

308 Washington Ave., Belleville  
450-9856 — 450-9857  
— CHINESE FOOD TO GO —

**FREE DELIVERY**  
to Belleville & Nutley

Your enjoyment of great Chinese food is our aim ...  
We wish you all the best of luck and enjoyment ...

Try our famous ... WONTON GALORE  
- "A meal in itself" ... \$7.00  
Foil wrapped beef (4 pcs) ... \$2.70  
Specialty of the week ...  
Fried Beef Balls ... \$4.95

Open 7 Days . . . 11 A.M. to 11 P.M.  
Fri. & Sat. to 11:30 P.M.  
Sundays 1 P.M. to 11 P.M.

Coming Soon —  
Expanded Restaurant Section of Diamond Express

# New CENTURY 25's

**AT LAST! A great tasting cigarette  
that saves you money.**

**5 EXTRA  
PER PACK**

**VALUE WITHOUT  
COMPROMISE**



No. available in all areas.

LIGHTS 100's 12 mg. "tar," 0.9 mg. nicotine,  
FILTER 15 mg. "tar," 1.1 mg. nicotine,  
av. per cigarette by FTC method.

Warning: The Surgeon General Has Determined  
That Cigarette Smoking Is Dangerous to Your Health.



# CLASSIFIED ADS sure to get results

In the Nutley Sun, Belleville Times and Bloomfield Life

## 667-3000

DEADLINE TUES. 12 NOON

## CLASSIFIED RATES

All Classified Line Ads Appear In All Three Papers:

The Nutley Sun The Belleville Times The Bloomfield Life

And Will Appear On **abc TV36** Channel 36/W  
During "The Community Bulletin Board" Time Frame

### TRANSIENT RATES

(Not Contract - Commercial)

49.99 First 3 Lines

1.20 Each Additional Line

### CONTRACT RATES

1/4 Consecutive 1.50	Per Line	1 Line Minimum
2/4 Consecutive 2.40	Per Line	1 Line Minimum
3/4 Consecutive 2.20	Per Line	1 Line Minimum

### DIRECTORIES

All Directories Must Be 4 Lines, One Inch Minimum, Paid In Advance  
Full Credit Is Extended - Signed Contract Must Be On File

4 X Consecutive 17.50	26 X Consecutive 110.00
1 X Consecutive 7.00	22 X Consecutive 9.00

### CLASSIFIED DISPLAY

7 Lines (Less) Or More, No Reserve Ads, Standard Banners Only

One Day 1.50	10 or more lines 1.25 per line
3-5 Days 2.50	26 or more lines 1.25 per line
1-3 Months 10.00	45 or more lines 1.25 per line

### ANNOUNCEMENTS

#### IN MEMORIAM

**HEWITT - Cora**,  
Happy Birthday  
in Heaven, Nan.  
No farewells were  
spoken, no time to say  
goodbye, you were gone  
before we knew it, and  
only God knows why.  
Love From  
Your Family

#### BELLEVILLE YELLOW CAB

OUT-OF-TOWN TAX  
SERVICE-ANYWHERE  
DEPENDABLE SERVICE  
759-2000

#### SEWING

Will Do  
HEMMING,  
MISSES  
ALTERATIONS &  
MISSES SEWING  
Call 235-0947

#### HELP!

I need a ride to Wil-  
liam Paterson Col-  
lege in September.  
Mon thru Thurs.  
Classes start at 3  
a.m. Will pay.  
Please Call Chris  
667-7499

#### AUTOMOTIVE

76 Mercury Montego  
Call 667-1327. \$975.00 or  
B.O. Just passed inspection

#### 1984 Toyota pickup for sale

owner to original owner.  
Call white 4 spd. syn-  
chro. 4 cyl. 1600 cc. 4  
cyl. 1600 cc. 4 cyl. 1600 cc.  
\$3,960. Call Mon thru Fri.  
8:30 a.m. to 5:00 p.m. ask  
for Mike at the counter or  
after 5:30 p.m. call 482-2780

#### 1971 LTD. New brakes, new battery

A.C. Engine needs work \$250.  
Call 667-9825

#### 76 HARBET 4 DR. A.C.

2000. MIX. & COND.  
8000. FIRM 667-5800

#### 1978 Ford Mustang

A.C. P.S. AM-PM Stereo  
Cassette less than 40,000  
miles. \$2,200 or B.O.  
\$1,215. Call 431-430

#### MELANIE'S SPECIAL

Call 667-9825  
GROOMING. NEED  
WORK OR USE FOR  
PARTS. BOTH FOR  
\$500. CALL 759-2320

#### AUTO WRECKERS

FRANKIE S. TOWING  
Junks Wanted,  
Cars, Trucks, etc.  
Highest Prices Paid  
Call 667-2192 or  
344-9492

#### MEADOWLANDS

#### AUTO WRECKERS

Buyers of All Junk Cars  
Trucks & Vans  
Sellers of Used Auto Parts  
Antiques & Everything  
Call **Richie Call**  
Open Mon-Sat.  
8 a.m. - 5 p.m.  
991-0180  
Belleville Turnpike  
P.O. Box 883  
North Arlington  
New Jersey 07032  
We Deliver

### AUTO PARTS & SUPPLIES

#### MODERN AUTO PARTS

Open 7 Days  
8:30-5:30 Weekdays  
9:00-1:00 Sunday  
• PARTS • PAINTS •  
• MACHINE SHOP •  
DISCOUNT PRICES  
82 Rutgers Street  
Belleville, NJ 07003  
759-5555

#### BILL'S AUTO WRECKERS

\$600 and up for Cars or  
Trucks any condition.  
Belleville Pike  
No. Arlington 667-7499

#### JUNK CARS WANTED

"Free Tow Away"  
Same Day Pick Up  
A.O.S. TOWING, INC.  
429-8471 Bloomfield  
481-2610 Newark

#### MAINTENANCE OF FLOOR CLEANING

FREE ESTIMATES  
FULLY INSURED  
Call 748-7111

#### COMPLETE OFFICE & HOME CLEANING

Commercial & Residen-  
tial  
Windows \$3.00 each.  
Reasonable rates.  
661-9300 or 759-1302

#### Rehab

Carpeting Service,  
Alterations, Extensions,  
Masonry.  
Handyman Work  
Handwood, Parquet  
Floors Installed.  
FHA approved.  
Call Tony  
after 5:30 p.m.  
933-1970

#### AUTO SERVICE

#### FREE TOWING & ROAD TESTS

#### Kwik's AUTOMATIC TRANSMISSIONS INC.

STANDARD & AUTOMATIC  
4 WHEEL DRIVE TRUCKS & CARS  
ESTIMATES  
998-9666  
(Across from North Arlington Drive)  
20 RIVER ROAD, NORTH ARLINGTON

#### INSURED

Minor Tree Trimming  
Clip 'n Save  
Ned Stevens  
226-7379  
7 Days, 5-9 p.m. Real Time!

#### AUTO INSURANCE

#### INCOME TAX

#### Delson Associates

#### AUTO INSURANCE CENTER

#### — CHECK OUR RATES —

Immediate Coverage Minimum Down Payment  
Mon-Friday, 10 a.m. - 5 p.m. - 7 p.m. - 8:30 p.m.  
Saturday 10 a.m. - 3 p.m.  
148 BLOOMFIELD AVE. BLOOMFIELD

#### AUTO WRECKERS

#### BIB'S ATTENTION! AUTO PARTS

#### USED CARS & TRUCKS

#### USED PARTS

#### USED PARTS

#### USED PARTS

#### USED PARTS

#### USED PARTS

#### USED PARTS

#### USED PARTS

#### USED PARTS

#### USED PARTS

#### USED PARTS

#### USED PARTS

#### USED PARTS

#### USED PARTS

#### USED PARTS

#### USED PARTS

#### USED PARTS

### CLEANING SERVICES

#### NORTH JERSEY MAINTENANCE

Complete Janitorial  
Service Commercial or Residential  
• Comm. Window Cleaning  
• Carpet Cleaning  
• Carpet Maintenance  
• Reversible Rates  
MICHAEL CAPONE  
661-2146  
Quality Workmanship

#### GENE'S CLEAN-OUT SERVICE

Rubbish removed from at-  
ticles, cellars, garages or en-  
tire estates. Compensation  
available. Free estimates.  
Call Gene  
661-9606 Ext. 46P.M.  
438-7413 days

#### MAINTENANCE OF FLOOR CLEANING

FREE ESTIMATES  
FULLY INSURED  
Call 748-7111

#### COMPLETE OFFICE & HOME CLEANING

Commercial & Residen-  
tial  
Windows \$3.00 each.  
Reasonable rates.  
661-9300 or 759-1302

#### Rehab

Carpeting Service,  
Alterations, Extensions,  
Masonry.  
Handyman Work  
Handwood, Parquet  
Floors Installed.  
FHA approved.  
Call Tony  
after 5:30 p.m.  
933-1970

#### AUTO SERVICE

#### FREE TOWING & ROAD TESTS

#### Kwik's AUTOMATIC TRANSMISSIONS INC.

STANDARD & AUTOMATIC  
4 WHEEL DRIVE TRUCKS & CARS  
ESTIMATES  
998-9666  
(Across from North Arlington Drive)  
20 RIVER ROAD, NORTH ARLINGTON

#### INSURED

Minor Tree Trimming  
Clip 'n Save  
Ned Stevens  
226-7379  
7 Days, 5-9 p.m. Real Time!

#### AUTO INSURANCE

#### INCOME TAX

#### Delson Associates

#### AUTO INSURANCE CENTER

#### — CHECK OUR RATES —

Immediate Coverage Minimum Down Payment  
Mon-Friday, 10 a.m. - 5 p.m. - 7 p.m. - 8:30 p.m.  
Saturday 10 a.m. - 3 p.m.  
148 BLOOMFIELD AVE. BLOOMFIELD

#### AUTO WRECKERS

#### BIB'S ATTENTION! AUTO PARTS

#### USED CARS & TRUCKS

#### USED PARTS

#### USED PARTS

#### USED PARTS

#### USED PARTS

#### USED PARTS

#### USED PARTS

#### USED PARTS

#### USED PARTS

#### USED PARTS

#### USED PARTS

#### USED PARTS

#### USED PARTS

#### USED PARTS

#### USED PARTS

#### USED PARTS

#### USED PARTS

#### USED PARTS

#### USED PARTS

#### USED PARTS

#### USED PARTS

#### USED PARTS

#### USED PARTS

#### USED PARTS

#### USED PARTS

#### USED PARTS

#### USED PARTS

### ELECTRICIANS

#### DE LIZO ELECTRICAL CONTRACTING, INC.

Industrial, Commercial  
No job too small or too far  
FREE ESTIMATES  
Call 759-5555  
License No. 4801

#### Call Us For Prompt Electrical Service

D & D ELECTRIC  
58 Bellavista Ave.  
Belleville 751-2782  
Lic. 220

#### VALERIA ELECTRIC

Commercial  
Residential  
Industrial  
24 Hour Emergency  
Lic. No. 7060  
Call 274-4070

#### Harry Elbertson 667-1474

D & E Elbertson  
Electric Inc.  
Residential, Commercial  
& Industrial  
Call 667-1474

#### 22 Linden Ave. Verona

Fully Insured Lic. 4906  
Call 274-4070

#### FLOOR SERVICE

#### DANIEL LOGAN FLOOR WAXING & GRINDING

Rugs scrubbed and steam  
cleaned. Also upholstery  
cleaning.  
CALL ANYTIME  
667-7155  
Satisfaction Guaranteed

#### WOOD FLOOR INSTALLATION

SANDING AND  
REFINISHING  
Residential and Commercial  
Door Repair  
Staining  
Bleaching  
Fully Insured-Free  
Estimates

#### HOME DESIGN ASSOCIATES

759-0107 667-9484  
GUTTERS  
thoroughly  
flushed  
INSURED  
(830 - 850)  
Minor Tree Trimming  
Clip 'n Save  
Ned Stevens  
226-7379  
7 Days, 5-9 p.m. Real Time!

#### AUTO INSURANCE

#### INCOME TAX

#### Delson Associates

#### AUTO INSURANCE CENTER

#### — CHECK OUR RATES —

Immediate Coverage Minimum Down Payment  
Mon-Friday, 10 a.m. - 5 p.m. - 7 p.m. - 8:30 p.m.  
Saturday 10 a.m. - 3 p.m.  
148 BLOOMFIELD AVE. BLOOMFIELD

#### AUTO WRECKERS

#### BIB'S ATTENTION! AUTO PARTS

#### USED CARS & TRUCKS

#### USED PARTS

#### USED PARTS

#### USED PARTS

#### USED PARTS

#### USED PARTS

#### USED PARTS

#### USED PARTS

#### USED PARTS

#### USED PARTS

#### USED PARTS

#### USED PARTS

#### USED PARTS

#### USED PARTS

#### USED PARTS

#### USED PARTS

#### USED PARTS

### SEALCOAT DRIVEWAYS

#### PATCHWORK & CONCRETE WORK

Call for  
FREE ESTIMATE  
NAT PANCARO  
667-6083

#### Call Us For Prompt Electrical Service

D & D ELECTRIC  
58 Bellavista Ave.  
Belleville 751-2782  
Lic. 220

#### VALERIA ELECTRIC

Commercial  
Residential  
Industrial  
24 Hour Emergency  
Lic. No. 7060  
Call 274-4070

#### Harry Elbertson 667-1474

D & E Elbertson  
Electric Inc.  
Residential, Commercial  
& Industrial  
Call 667-1474

#### 22 Linden Ave. Verona

Fully Insured Lic. 4906  
Call 274-4070

#### FLOOR SERVICE

#### DANIEL LOGAN FLOOR WAXING & GRINDING

Rugs scrubbed and steam  
cleaned. Also upholstery  
cleaning.  
CALL ANYTIME  
667-7155  
Satisfaction Guaranteed

#### WOOD FLOOR INSTALLATION

SANDING AND  
REFINISHING  
Residential and Commercial  
Door Repair  
Staining  
Bleaching  
Fully Insured-Free  
Estimates

#### HOME DESIGN ASSOCIATES

759-0107 667-9484  
GUTTERS  
thoroughly  
flushed  
INSURED  
(830 - 850)  
Minor Tree Trimming  
Clip 'n Save  
Ned Stevens  
226-7379  
7 Days, 5-9 p.m. Real Time!

#### AUTO INSURANCE

#### INCOME TAX

#### Delson Associates

#### AUTO INSURANCE CENTER

#### — CHECK OUR RATES —

Immediate Coverage Minimum Down Payment  
Mon-Friday, 10 a.m. - 5 p.m. - 7 p.m. - 8:30 p.m.  
Saturday 10 a.m. - 3 p.m.  
148 BLOOMFIELD AVE. BLOOMFIELD

#### AUTO WRECKERS

#### BIB'S ATTENTION! AUTO PARTS

#### USED CARS & TRUCKS

#### USED PARTS

#### USED PARTS

#### USED PARTS

#### USED PARTS

#### USED PARTS

#### USED PARTS

#### USED PARTS

#### USED PARTS

#### USED PARTS

#### USED PARTS

#### USED PARTS

#### USED PARTS



## HELP WANTED

**DRIVERS WANTED**  
Over 21 with clean driving record for package delivery with company van. Steady full time work. \$5.00 an hour with training \$5.00 plus commission after training. Will consider semi-retired person for part time route. Interview Friday 10am-3pm. 187 Cortlandt Street, Belleville.

## MODELS - MOVIE EXTRAS

Actors - Singers - Dancers  
ALL AGES & TYPES  
No experience required  
Needed for Motion Pictures, TV Commercials, Print & Modeling  
N.J. State Licensed  
UNIVERSAL CASTING  
No Fees  
201-994-3120

## INSIDE CLASSIFIED SALES

Part time and full time classified telephone representatives needed during the daytime. Must be able to type. Guaranteed salary plus commission.

Call 667-3000  
Ask for Phyllis  
Between 9-3 P.M.

**SALESPERSON**  
TELEVISION COMMERCIALS FOR WELL KNOWN TV STUDIO GOOD COMMISSION SALES EXPERIENCE PREFERRED. CONTACT HOWIE WEEKDAYS BETWEEN 9 A.M. - 11 A.M.  
667-2710

## Tool &amp; Die Maker

All around exp. Build & repair automatic machines, progressive dies, etc. Steady employment, excellent benefits. Call, write or apply

Personnel Dept. 997-3000  
GOODY PRODUCTS  
969 NEWARK TURNPIKE  
KEARNY, N.J. 07032  
equal opportunity employer M F

## DRIVER

Knowledge of New York City, New Jersey and Long Island areas. Office services required when not driving. Liberal company benefits.

## CALL PERSONNEL

997-3000

## TRUCK DRIVER, p/t

Knowledge of Northern N.J. area helpful. Good working cond. APPLY IN PERSON.

## SALLY'S AUTO PARTS

75 FRANKLIN AVE.

NUTLEY, N.J.

## LIGHT FACTORY WORK

MALE PREFERRED

IN NAMEPLATE COMPANY.

UNIPLETE CORP.

681 MAIN STREET

BELLEVILLE, N.J.

759-6017

## WAREHOUSE ASSISTANT

SHIPPING &amp; RECEIVING

U.S. GRAD PREFERRED. GOOD WITH FIGURES. ABLE TO DO PHYSICAL WORK. SOME WAREHOUSE OR FACTORY EXPERIENCE. PREFERRED. ALL INCREASING STEADY JOB AT MODERN MANUFACTURING PLANT.

## VAN NISS PLASTICS

555 CORTLANDT STREET

BELLEVILLE

759-8200

## LIGHT FACTORY

PACKERS OPERATORS

FEMALE/M

DAY SHIFT 7AM-3PM

EVENING SHIFT 3PM-11PM

EXPERIENCED FACTORY WORKERS PREFERRED. LIGHT CLEAN WORK. ALL BENEFITS. STEADY JOB. MODERN MANUFACTURING PLANT.

VAN NISS PLASTICS

555 CORTLANDT ST

BELLEVILLE

759-8200

759-8200

759-8200

759-8200

759-8200

759-8200

759-8200

759-8200

759-8200

759-8200

759-8200

759-8200

759-8200

759-8200

759-8200

759-8200

759-8200

759-8200

759-8200

759-8200

759-8200

759-8200

759-8200

759-8200

759-8200

759-8200

759-8200

759-8200

759-8200

## HELP WANTED

**ENGINEER/CIVIL**  
Municipal public works design & construction supervision. Civil engineer degree with min. 2 yrs. experience. Call or write: Director of Public Works Municipal Building Bloomfield, N.J. 07003  
743-4400  
Ext. 282

## WORK FROM HOME ON THE TELEPHONE

**SERVICING OUR CUSTOMERS**  
CALL 998-7216

**HELPER**  
To do ceramic tile, sheet rock, carpentry, renovation work. Experience preferred. Full time or part time. Must have own transportation.  
Call after 6pm  
667-1776

We have an opening for a switchboard operator/receptionist. Experience a plus, pleasant phone voice necessary. Call 997-4010, or apply in person.

**Hospital Products**  
Sales Inc.  
1150 Harrison Turnpike  
So. Kearny, N.J. 07032

**Deli Help P/T**, with possibility for P.T. hours. 6am-2pm, 11am-5pm. Also kitchen help. Apply in person (ask for John or Linda).  
Roths Deli  
833 Franklin Ave.  
Nutley, N.J. 07110  
667-0202

## SECRETARY

MEDICAL

Busy Work Processing Dept. of large hospital seeks experienced typist with excellent telephone typing skills and a good command of English as well as some medical experience to work full time or part time as Medical Transcriber.

We offer a high starting salary and fully paid fringe benefits package for full timers including:

- 3 weeks annual vacation
- pension plan
- hospitalization insurance
- dental insurance
- prescription plan
- tuition assistance
- 12 paid holidays
- sick days

as well as a pleasant progressive working environment. Easily accessible from GSP to RT 280.

Apply 10 AM - 4 PM or Call Personnel Dept.

188 So. Essex Ave.  
Orange, N.J. 07065

**The Hospital Center at Orange**

201-296-2270

188 So. Essex Ave.  
Orange, N.J. 07065

**STORE CLERKS**

**MIDNIGHT SHIFT**

12 A.M. - 8 A.M.

For convenience food store in Belleville Area.

Must be 18 or older. Part time day & evening shifts also available. Apply in person.

**HUBBARD'S CUPBOARD**

304 Belleville Ave.

Belleville 93

**RECEPTIONIST**

Full time, 9-3 P.M.

Large real estate investment firm seeking individual with front office appearance & attitude to meet & greet their clients. Applicant should have 50 wpm typewriting, telephone manner, willingness to accept many diversified duties & strong organizational ability. Previous receptionist experience necessary. For interview call Lyette 751-7500.

**Govel Realtors**

727 Joramela St.

Belleville

**ACTS PAYABLE & ORDER PROCESSING**

CR experience. Call for interview between 8AM-2PM.

481-5545 Ask for Joe

93

**PIANO & ORGAN**

**WAREHOUSE SHOWROOM**

For the largest Piano and Organ Dealer on the East Coast.

New Used Piano Models, Demo's

15 NATIONALLY FAMOUS BRANDS

Over 300 Catalogued Instruments

Guaranteed Lowest Prices

Used Pianos and Organs from

**999**

Retail Purchase Plan Available

Call or see Ed Boniga

**744-1200**

**Baldwin - Hammond**

1100 N. 1st Ave.

Belleville

**COMPLEX IV**

15 Gloria Lane

Parfield, N.J. 07066

N.J. State Lic.

E.O.E.

93

93

93

93

93

93

## HELP WANTED

**REAL ESTATE SALES PERSON**  
Marge McDonald is in need of P.T. sales persons. Licensed & experienced. ALL INQUIRIES CONFIDENTIAL.  
CALL 429-7372

997-8086  
\$4.00 PER HOUR + COMMISSION  
\$15.00 PER HOUR

**WORK FROM HOME ON THE TELEPHONE**  
SERVICING OUR CUSTOMERS  
CALL 998-7216

Part time sales for young men & boys department. Experience preferred but not necessary. Call JNC The Mens Store 667-9200 Ask for John.

**WAITERS, WAITRESSES & BUSPERS**  
Full or part time positions available. Days or evenings. Apply in person.

**GLEN RIDGE COUNTRY CLUB**  
555 Ridgewood Avenue  
Glen Ridge 932

**PART TIME DRIVERS**  
AND/OR SCHOOL VEHICLE AIDES  
MALE/FEMALE

Excellent opportunity for retiree's housewives, etc. to supplement your income driving or supervising school children in our cars or station wagons. Good working conditions. Top salary.

Applicants must be persons of good character and experienced drivers.

over 25 yrs. of age with a good driving record.

998-4800

**NUTLEY LAW FIRM**

**Seeks Receptionist/Typist**

Legal experience not required. Excellent telephone skills, typing & dictation skills are a must. Contact Julie at 661-0710

**DISHWASHER**

**POTWASHER FULL-TIME**

ASK FOR BOB

661-0710

**INSTRUCTIONS**

**NEED A MATH TUTOR?**

**Call**

**751-5150**

**ANYTIME**

93

**Piano Lessons**

All Ages Call Tom

998-6243

**TUTORING SERVICES**

**READING, LANGUAGE, ARTS, Math Grades K-8**

Available. Available. Available.

661-4009 93

**MUSIC TEACHER**

(Also Professional Music Copyist) Now accepting students for

"FLUTE" "SAXOPHONE"

"CLARINET" "GUITAR"

"BASS GUITAR"

In your own home.

Please call 338-1865

**Business Opportunities**

**NUTLEY CONDO INVESTMENT**

\$4,500 down

Invest in this fantastically located office condo in central Nutley. Will be your projected expenses & leave approximately 9% cash flow return left over for you. 1200 sq ft & just renovated. This investment is available at the original offering price of \$69,900.

• Down payment includes estimated closings cost & is available to qualified buyers. This condo is not registered in N.J. & is not available to N.Y. Residents. Sold thru Realtor by prospectus.

773-6282

Cirkus 93

**LUNCH WAGON FULLY EQUIPPED**

**ELECTRIC WATER & GAS**

ASKING \$47,000

853-7218

**SITUATION WANTED**

Professional ironer specializes in men's shirts. Call 759-4871 after 12pm.

**REAL ESTATE**

**FOR RENT**

4 RM APT. 1st FLR. H.W. RENT \$450. P.I.U. SNOW REMOVAL

743-5467

**HOME HEALTH CARE**

specializes in men's shirts. Call 759-4871 after 12pm.

Call 748-9644

93

93

93

93

93

93

93

93

93

93

93

93

93

93

93

93

## REAL ESTATE

FOR RENT

FOR RENT

FOR RENT

FOR RENT

FOR RENT

FOR RENT

FOR RENT

FOR RENT

FOR RENT

FOR RENT

FOR RENT

FOR RENT

FOR RENT

FOR RENT

FOR RENT

FOR RENT

FOR RENT

FOR RENT

FOR RENT

FOR RENT

FOR RENT

FOR RENT

FOR RENT

FOR RENT

FOR RENT

FOR RENT

FOR RENT

FOR RENT

FOR RENT

FOR RENT

FOR RENT

FOR RENT

FOR RENT

FOR RENT

FOR RENT

FOR RENT

FOR RENT

FOR RENT

FOR RENT

FOR RENT

FOR RENT

FOR RENT

FOR RENT

FOR RENT

FOR RENT

FOR RENT

FOR RENT

FOR RENT

FOR RENT

FOR RENT

FOR RENT

FOR RENT

FOR RENT

FOR RENT

FOR RENT

FOR RENT

FOR RENT

FOR RENT

FOR RENT

FOR RENT

FOR RENT

FOR RENT

FOR RENT

FOR RENT

FOR RENT

FOR RENT

FOR RENT

FOR RENT



REAL ESTATE

REAL ESTATE

REAL ESTATE

REAL ESTATE

REAL ESTATE

REAL ESTATE

REAL ESTATE

REAL ESTATE

REAL ESTATE

180 Centre St.  
Nutley, N.J. 07110  
667-3440

# GEORGE E. MAC MUNN C.O.

## REALTORS

100 Woodport Road  
Sparta, N.J. 07871  
729-8727

### SUCCESS

Our Expert  
Sales Staff  
Can Achieve  
The Same  
For You —  
List With  
Mac Munn



**GRACIOUS LIVING - NUTLEY** - Impressive center hall with beautiful natural trim & leaded glass, 4 bedrooms, 2 baths, frpl., lovely deep secluded lot with 2 car garage. ASKING \$168,900. YOUR OFFER MAY TAKE IT!



**JUST LISTED - NUTLEY** - custom built one owner home in Spring Garden area, frpl., nice dining room, 3 bedrooms, encl. porch, maint. free exterior. ASKING \$134,900.

Look for this Emblem



**ASKING \$125,900. BYRAM TWP.**, 2 mi. north of Rt. 80 off Rt. 206, beautiful level 145x188 property, 4 bedrooms, 2 baths, lovely fam. room, covered deck from sliders in Din. Rm. A GREAT BUY!!



**SPARTA** - Raised ranch with beautiful view of lake & mountains, 3 bedrooms, 2 baths, huge family room. ASKING \$114,900.

## R L C Realty Enterprises

Specializing in  
\* management \* syndications \* mortgages  
\* investment properties \* sales

242 Washington Avenue - Suite D  
Nutley, N.J. 07110 - 201-667-6565

**EXCLUSIVE**  
Located in Nutley Center — 4 stores, 5 apt.  
1 lot 40 x 100. Land approx. 23,000 sq. ft.  
to be sold as one parcel — call for appointment

Open 6 days  
Sundays by  
appointment

Our motto is "P.E.C."  
Professionalism Efficiency Courtesy



Rosa Lee Capriglione  
President  
Lic. Real Estate Broker



334 Belleville Ave. Belleville, N.J.  
751-1121

Office Manager  
Rosemarie Perrone



Residential • Commercial • Industrial • Investments • Mortgages • Insurance

### NUTLEY

Just Reduced!

Move right in to this 3 BR  
Colonial. Natural wood  
trim. Finished basement  
w/dry bar plus many  
extras. Quiet residential  
area. Close to schools and  
transportation.  
\$129,900.

**SHERIFF'S SALE**  
SUPERIOR COURT OF NEW JERSEY,  
CHANCERY DIVISION, ESSEX COUNTY,  
DOCKET NO. F-1421-85 FEDERAL NATIONAL  
MORTGAGE ASSOCIATION, PLAINTIFF vs.  
ARNOLD LEWIS, ET AL. DEFENDANTS  
Execution For Sale of Mortgaged Premises  
By virtue of the above stated writ of Execution,  
to me directed, I shall expose for sale by Public  
Auction, in SHERIFF'S OFFICE, Essex County  
Court Building in Newark, on Tuesday, the 17th day of September next, at one  
thirty P.M. (Prevaling Time).  
Municipality: City of Newark, County of Essex.

Street address: 26 Silver Street  
Tax Lot and Block: Lot 5, Block 4108  
Approximate dimensions: 90 feet x 25 feet  
Nearest cross street: Smith Street (formerly  
Hillside Road)  
Please execute on the Writs and advise me of  
the date of the sale.

A Full Legal Description can be found in the  
Office of the Register of Essex County.  
The approximate amount of the Judgment  
to be satisfied by said sale is the sum of FIFTY-  
SEVEN THOUSAND THREE HUNDRED SIXTY-  
SEVEN DOLLARS AND NINETY-NINE CENTS  
(\$57,367.99), together with the costs of the  
sale.

The Sheriff reserves the right to adjourn the  
sale from time to time as provided by Law.  
Newark, N.J. August 12, 1985  
THOMAS D'ALESSIO, SHERIFF  
Alvin D. Miller, Attorney

The Belleville Times  
Aug. 22, 29  
Sept. 5, 12, 1985  
Fee: \$75.20

No. 885-318

**SHERIFF'S SALE**  
SUPERIOR COURT OF NEW JERSEY,  
CHANCERY DIVISION, ESSEX COUNTY,  
DOCKET NO. F-876-85 THE FEDERAL  
NATIONAL MORTGAGE ASSOCIATION, a  
corporation, PLAINTIFF vs. DONALD LAN-  
CASTER, et al. DEFENDANTS  
Execution For Sale of Mortgaged Premises  
By virtue of the above stated writ of Execution,  
to me directed, I shall expose for sale by Public  
Auction, in SHERIFF'S OFFICE, Essex County  
Court Building in Newark, on Tuesday, the 17th day of September next, at one  
thirty P.M. (Prevaling Time).  
The property to be sold is located in the  
Township of Irvington, in the County of Essex,  
and State of New Jersey.

Commonly known as 70 Harrison Place, Ir-  
vington, New Jersey  
Tax Lot No. 5 in Block No. 205  
Dimensions of Lot: (Approximately) 50 feet  
wide by 95 feet long

Nearest Cross Street: Situate on the Eastern side  
of Harrison Place, 288 feet from the  
Southern side of Hopkins Place.  
A Full Legal Description can be found in the  
Office of the Register of Essex County.  
The approximate amount of the Judgment  
to be satisfied by said sale is the sum of  
THIRTY-THOUSAND EIGHTY-THREE DOLLARS  
AND TWO CENTS (\$30,083.02), together with  
the costs of the sale.

The Sheriff reserves the right to adjourn the  
sale from time to time as provided by Law.  
Newark, N.J. August 12, 1985  
THOMAS D'ALESSIO, SHERIFF  
Alvin D. Miller, Attorney

The Belleville Times  
Aug. 22, 29  
Sept. 5, 12, 1985  
Fee: \$75.96

No. 885-317

Zucker, Goldberg, Becker & Alesio, Attorneys  
The Belleville Times  
Aug. 22, 29  
Sept. 5, 12, 1985  
Fee: \$75.96

No. 885-317

**SHERIFF'S SALE**  
SUPERIOR COURT OF NEW JERSEY,  
CHANCERY DIVISION, ESSEX COUNTY,  
DOCKET NO. F-8513-83 FIDELITY  
BOND AND MORTGAGE COMPANY  
PLAINTIFF vs. ANGEL LOPEZ, et al.  
Execution For Sale of  
Mortgaged Premises  
By virtue of the above stated writ of Execution,  
to me directed, I shall expose for sale by Public  
Auction, in SHERIFF'S OFFICE, Essex County  
Court Building in Newark, on Tuesday, the 17th day of  
September next, at one-thirty P.M. (Prevaling Time).  
Municipality: City of Newark  
COUNTY AND STATE COUNTY OF  
Essex, STATE OF NEW JERSEY  
STREET & STREET NO.: 22 Springdale  
Avenue  
TAX BLOCK & LOT: BLOCK 1946  
LOT 63

**DIMENSIONS OF LOT:** Tract One  
98.51 feet x 7 feet. Tract Two 30.85  
feet x 86.50 feet, 30 feet x 102.75 feet  
**NEAREST CROSS STREET:** Tract One  
132.83 feet from North 9th Street. Tract  
Two 102.75 feet from North 9th Street.  
A Full legal description can be found in  
the Office of the Register of Essex County.

The approximate amount of the Judgment  
to be satisfied by said sale is the sum of  
THIRTY-SEVEN THOUSAND  
NINE HUNDRED TWELVE DOLLARS  
AND FORTY-TWO CENTS (\$37,912.42),  
together with the costs of this sale.

The Sheriff reserves the right to adjourn the  
sale from time to time as provided by  
Law.

Newark, N.J. August 12, 1985  
THOMAS J. D'ALESSIO, Sheriff  
WILLIAM M. E. POWERS, JR., Attorney  
Bloomfield Life  
Aug. 22, 29, 1985  
Sept. 5, 12, 1985  
Fee \$78.96

No. BD 85-38

**NOTICE**  
The regularly scheduled meeting-conference of the Board of Commissioners on  
September 10, 1985 will begin at 6:30 p.m. at  
which time the Board will discuss changes in  
the zoning ordinance.  
At 7:00 p.m., on Tuesday, September 10,  
1985 the Board of Commissioners will hold a  
hearing to determine if a hardship variance  
should be given to Frea's & Paf's, Inc. for  
transfer of a liquor license within the distance  
allowed by ordinance.  
The regular open public meeting will be  
held at 8:00 p.m., as scheduled.

Always Low! Low!  
Township Clerk  
The Belleville Times  
Sept. 5, 1985  
Fee: \$8.46

885-322

The Belleville Times  
Aug. 29, Sept. 5, 12, 19, 1985  
Fee: \$69.50

**SHERIFF'S SALE**  
SUPERIOR COURT OF NEW JERSEY,  
CHANCERY DIVISION, ESSEX COUNTY,  
DOCKET NO. F-2365-85 THE NEW YORK  
GUARDIAN MORTGAGE CORP. PLAINTIFF  
vs. OSWALD GOWDIE, et al. DEFENDANTS  
Execution For Sale of Mortgaged Premises.  
By virtue of the above stated writ of Execution,  
to me directed, I shall expose for sale by Public  
Auction, in SHERIFF'S OFFICE, Essex County  
Court Building in Newark, on Tuesday, the 24th day of September next, at one  
thirty P.M. (Prevaling Time).  
Municipality: City of Newark, County of Essex.

Street address: 4 West End Avenue,  
Newark, N.J.  
Tax Lot and Block: Lot 7, Block 4037  
Approximate dimensions: 100 x 50  
Nearest cross street: South Orange Avenue  
122.98

A Complete description can be found in the  
Essex County Register's Office.  
The approximate amount of the Judgment  
to be satisfied by said sale is the sum of SIXTY  
THOUSAND FOUR HUNDRED NINETY  
NINE DOLLARS AND SIXTEEN CENTS  
(\$60,499.16), together with the costs of this  
sale.

The Sheriff reserves the right to adjourn the  
sale from time to time as provided by Law.  
Newark, N.J. August 19, 1985  
THOMAS J. D'ALESSIO, Sheriff  
Alvin D. Miller, Attorney

The Belleville Times  
Aug. 29, Sept. 5, 12, 19, 1985  
Fee: \$69.50

The Belleville Times  
Aug. 29, Sept. 5, 12, 19, 1985  
Fee: \$75.96

No. 885-317

## OPEN HOUSE

56 COLONIAL TERRACE, NUTLEY  
2:00-4:00 p.m. Sunday, September 7, 1985

Exquisitely landscaped, park-like property is the setting for this  
charming, four bedroom Center Hall Stucco colonial. Located in  
the desirable Yantacaw area of Nutley, just a short walk to New  
York transportation, this home is ready for immediate oc-  
cupancy. \$198,000.00.



**Ladendorff**  
and associates, inc.

635 VALLEY ROAD, UPPER MONTCLAIR, N.J. 07043



For nationwide relocation assistance,  
call toll free 1-800-523-2460 ext. F-714



**Century 21** WAYNE K. THOMAS  
REALTORS

277 Broad Street Bloomfield, New Jersey  
(201) 429-7400

Each office independently owned and operated  
MEMBER OF BLOOMFIELD GLEN RIDGE,  
NUTLEY, BELLEVILLE ALBUM OF REALTORS

# SAVE UP TO 1/2 OFF! FOR BACK-TO-SCHOOL!



**1/2 PRICE** 6-PACK (9-OZ.) OR 12-OZ. PKG. **Sun Giant Raisins** REG. .99 **.49**

**1/2 PRICE** ShopRite **Sandwich Bags** REG. 200-ct. box **.49**

**1/2 PRICE** REG. DIET OR CAFFEINE FREE **C&C Cola** REG. 2-ltr. btl. **.39**

**1/2 PRICE** BES PAK **Lawn & Leaf Bags** REG. 10-ct. box **.99**

**1/2 PRICE** VANILLA OR ASSORTED **ShopRite Sugar Wafers** REG. 10-oz. pkg. **.69**

**SAVE 1/3 OFF ON THESE ITEMS!**  
ALL VARIETIES (25.35-OZ. T.W.)  
**Ssips Drinks** REG. 4-oz. box **.46**  
**Fruit Roll-Ups** REG. 4-oz. box **1.26**  
**ShopRite Juices** REG. 3-pk. **.59**  
**Mott's 100% Juices** REG. 3-pk. **.65**  
**Hi-C Fruit Drinks** REG. 9-pk. **1.32**

**General Merchandise**  
WIDE RULED **ShopRite Filler Paper** 300 CT. PKG. **.89**

ShopRite ALL SHEER IN SEV. COLORS (WHERE AVAILABLE)  
**Wizard Pantyhose** 1-pr. 1-pkg. **.59**

WIDE RULED OR WIRE BOUND  
**1-Subject Notebook** 2-70 ct. **.79**  
**3-Subject Notebook** 150 ct. **1.19**  
**Bic Stick Pens** 10-pack **1.19**

**DEEP DYNAMITE DISCOUNTS ON HEALTH & BEAUTY AIDS**

**YOUR CHOICE Aim, Crest or Colgate Toothpaste** 4.6-oz. tube **1.19**

WHY PAY MORE? **Z-Bec Vitamins** 50-ct. btl. **3.25**

ASSORTED VARIETIES **Prell Shampoo** 16-oz. btl. **2.49**

REG. OR SUPER BONUS PACK **New Freedom Maxi Pads** 36-ct. box **3.49**

WHY PAY MORE? **Alka-Seltzer** 12-ct. pkg. **1.29**  
**Old Spice Stick** 2.5-oz. stick **1.79**

**The Frozen Food Place**

**"SELECT" Citrus Hill Orange Juice** 12-oz. can **1.19**

ALL VARIETIES **Banquet Dinners** 11-oz. pkg. **.99**  
**Ice Cream** 1/2-gal. cart. **1.99**

**The Bakery Place**

SANDWICH OR ROUND TOP **ShopRite White Bread** 20-oz. lvs. **2.99**

ASST. VAR. MULTIPACK **ShopRite Snack Cakes** 14-oz. box **1.49**  
**Potato Chicks** 11-oz. bag **.99**

**ShopRite Coupon** (200)  
WITH THIS COUPON ONE (1) 1-GT. 1PT. BTL. OF WHITE OR PINK OCEAN SPRAY **Grapefruit Juice** **1.19**  
Coupon good at any ShopRite Market. Limit one per family. Effective Sun. Sept. 1 thru Sat. Sept. 7, 1985. **SAVE .30**

**LOCKED IN SAVINGS... NOW THRU NOV. 2ND LOOK FOR THESE PRICE LOCK SIGNS**

WHY PAY MORE? **Tetley Tea Bags** 100-ct. box **1.89**

ALL GRINDS **Savarin Coffee** 1-lb. can **1.89**  
**CHUNK LIGHT IN WATER** **3 Diamonds Tuna** 6-1/2-oz. can **.49**  
**DECORATED OR ASSORTED Brawny Towels** 70-ct. roll **.59**

**More Grocery Savings From ShopRite!**

**ShopRite Iced Tea** 4-lb. canister **2.99**

WHY PAY MORE? **RealLemon Juice** 1-qt. btl. **.99**  
**SOLID PACK IN OIL OR WATER** **ShopRite White Tuna** 6-1/2-oz. can **.89**

**The MEATING Place**

**RIB CUT ROAST OR Center Cut Pork Chops** 1-lb. **1.59**

MEATY RIB PORTION **Pork Loin for BBQ** 1-lb. **1.39**  
LOW PORTION 3-1/1 CHOPS **Pork Chop Combo** 1-lb. **1.29**  
CENTER CUT **Boneless Pork Chops** 1-lb. **2.69**  
BONELESS (FOR KABOBS) **Pork Tenderloin** 1-lb. **2.99**  
RIB PORTION, BONELESS **Pork Loin Roast** 1-lb. **1.99**  
PERDUCE WHOLE W/IRB CAGE (ANY SIZE PKG.) **Chicken Breast** 1-lb. **1.59**  
PERDUCE ANY SIZE PKG. **Chicken Wings** 1-lb. **.79**  
BONELESS CHICKEN BREAST **Boneless Chicken Breast** 1-lb. **2.79**  
THORN APPLE VALLEY THICK CUT **Corned Beef Brisket** 1-lb. **1.29**  
NEW ZEALAND FROZEN BLADE CUT **Shoulder Lamb Chops** 1-lb. **1.39**

**ShopRite Coupon** (400)  
WITH THIS COUPON ONE (1) 1-LB. CAN ALL GRINDS EXCEPT DECAF **Maxwell House Coffee** **1.69**  
Coupon good at any ShopRite Market. Limit one per family. Effective Sun. Sept. 1 thru Sat. Sept. 7, 1985. **SAVE .50**

RED, LITE RED OR GRAPE DRINK **Hawaiian Punch** 1-qt. 14-oz. can **.59**

PURE VEGETABLE **Crisco Shortening** 3-lb. can **2.39**  
**CHICKEN OR BEEF** **College Inn Soups** 3 13-1/4-oz. cans **1.00**  
**ABSORBENT MEDIUM OR LARGE** **Pampers Diapers** 32-ct. box **7.99**

**REG., DIET, LIGHT OR Pepsi Free** 2-ltr. btl. **.99**

OCEAN SPRAY PINK OR WHITE **Grapefruit Juice** 1-qt. 1-pt. btl. **1.49**  
**ALL VAR. CAKE MIXES** **Pillsbury Plus** 1-lb. 2-oz. box **.69**

**The Produce Place**  
**RUSSET Baking Potatoes** 5-lb. bag **.79**

**WASHED OR NATURAL Snow White Mushrooms** 12-oz. pkg. **.89**

FRESH CRISP **Green Spinach** 10-oz. bag **.79**  
FRESH FROM NEAR BY FARMS **Yellow Corn** 8-1/2-oz. **.99**  
FRESH CALIFORNIA **Bartlett Pears** 1-lb. **.59**  
U.S. #1 **Yellow Onions** 3-lb. bag **.89**  
FOR SALADS OR COLE SLAW **Green Cabbage** 1-lb. **.19**  
EXTRA LARGE 24 SIZE **Crisp Celery** stalk **.59**  
FRESH RIPE **Cherry Tomatoes** 1-dry pint **.99**

**The Dairy Place**

**ALL FLAVORS La Yogurt** 6-oz. conts. **3.100**

WHY PAY MORE? **ShopRite Sour Cream** 1-pt. cont. **.79**  
**TROPICANA PREMIUM PACK Orange Juice** 1 1/2-gal. cont. **1.89**

**The Deli Place**

**WILSON Corn King Canned Ham** 5-lb. can **7.99**

**First Aid Tips**

• Bites or Stings-Insects: For minor bites or stings apply cold compresses and soothing lotions such as calamine. For bee stings remove stinger with tweezers and apply cold compresses. For tick bites, cover tick with a heavy oil to close its pores. If the tick does not disengage, leave oil on for 30 minutes. Carefully remove oil parts with tweezers. Wash area thoroughly with soap and water. Consult doctor immediately if any reactions occur such as hives, rash, pallor, weakness, nausea, vomiting, collapse or lightness in chest, nose or throat.

• Animal or Human Bites-Thoroughly wash wound with soap and water. Cover with a sterile dressing and consult doctor. (Note: Every effort should be made to restrain any animal to observe for rabies. Notify police or health officer.)

**Call us at ... 235-0821**

OPEN 7 DAYS: Monday-Thursday 8am-9pm; Friday 8am-10pm; Saturday 8am-6pm; Sunday 9am-2pm		(Nitroglycerin Transdermal) * Transderm 30 Nitro-5	(Nitroglycerin Transdermal) * NitroDur 2 28 15cm or 20cm 2
Friday 8am-10pm; Saturday 8am-6pm; Sunday 9am-2pm	(Nitroglycerin Transdermal) * Transderm 30 Nitro-10	(Nitroglycerin Transdermal) * NitroDur 2 30 60 mg Tablets	(Nitroglycerin Transdermal) * NitroDur 5 mg. 30
	(Nitroglycerin Transdermal) * NitroDur 6.5 mg. Capsules	(Nitroglycerin Transdermal) * NitroDur 10 mg	

\* Requires Prescription Expires Sept. 14, 1985  
• Quantities less than those listed may be slightly higher.

## ShopRite: STILL THE LOW PRICE LEADER

For Location of your Nearest ShopRite Call These Toll Free Numbers: From 8am - 6pm Monday thru Friday  
**NEW JERSEY: 800-492-4173 Conn., Del., New York, Penn., Mass.: 800-526-6912**

In order to assure a sufficient supply of sales items for all our customers, we must reserve the right to limit the purchase to units of 4 of any sales items, except where otherwise noted. Not responsible for typographical errors.  
Prices effective Sun. Sept. 1 thru Sat. Sept. 7, 1985. None sold to other retailers or wholesalers. Artwork does not necessarily represent item on sale; it is for display purposes only. Copyright WAKEFERN FOOD CORPORATION 1985.